



-  +91 63572 31555
-  T-1, Om Arcade, Nr. Sardar Gunj,
Opp. Prasang Party Plote,
Anand-38800, Gujarat, India. 388001
-  Info@gajananddenterprises.com
-  www.gajananddenterprises.com



High | Quality | Performance



Focused on quality, innovation, and technological excellence

Gajanandd Enterprises provides the pharmaceutical, biotech and cosmetic industries with the most advanced technological equipment in the market, contributing to the improvement of the well-being and quality of life of people.

The water and land transportation is extremely convenient. The company is a domestic professional machinery production enterprise, which integrates research and development, manufacturing, sales and service, focusing on research, development, production and sales of health and pharmaceutical equipment and various packaging automation equipment. The enterprise has strong technical Force, 17 years of industry technical experience and perfect service system, and adopts strict production standards and testing standards, so that the product quality and service quality are recognized by customers. The company's main products include: automatic packaging machine, pharmaceutical machine, automatic liquid filling machine and auxiliary machinery, etc. At the same time, it can also design and develop various non-standard special equipment for customers to fully meet the personalized needs of different customers for products. Gajanandd Enterprises adheres to the service concept of "pioneering and innovation, honest management, customer first", with high quality and stable products, exquisite technology and perfect after-sales service have won the trust and support of customers. Welcome friends from all walks of life to visit, guide and negotiate business.

CORE BUSINESS

Pharmaceutical packaging machinery design, development, and manufacturing

Gajanandd Enterprises designs, develops, and manufactures washing, sterilizing, filling, freeze-drying, and closing machines for vials, bottles, syringes, cartridges, and IV Bags to process liquid, semi-solid products, and powders in sterile conditions. The machines run either individually or can be integrated into a complete production line.



AFTER-SALES SERVICE

Supporting locally, acting globally

We have created a cross-functional team of more than 15 nationalities to give excellent after-sales service. Our team is represented in more than 80 countries with continuous support from local offices and sales representatives.



- **Special in Fully Automatic Package Production line/ Blister Packing Machine/ Carton machine/ Capsule Filling Machine/ Tablet Pressing Machine Research And Manufacture**

P

PRODUCT CATALOG

01

Solid Preparation Equipment

| | |
|--|----|
| GE-CSJ Series Coarse Crusher | 07 |
| GE-FS Series Universal Crusher | 08 |
| GE-CFS Series Superfine Pulverizer | 09 |
| GE-SH Series Three Dimensional Mixing Machine | 10 |
| GE-VH V-type Mixer | 11 |
| GE-CH Series Trough Shape Mixer | 12 |
| GE-SZ Series High Speed Wet Mixing Granulator | 13 |
| GE-GF Fluid Bed Dryer | 14 |
| GE-ZS Solid Preparation Granulation Production Line | 17 |
| GE-ZGF Series Continues Vibrating-Fluidizing Dryer | 21 |
| GE-GZ Dry Granulator | 22 |
| GE-SF Vibrating Sifter | 23 |
| GE-DW Series Belt Dryer | 24 |
| GE-PG Series High Speed Centrifugal Spray Dryer | 25 |
| GE-RXG Series Hot Air Circulation Oven | 26 |
| GE-SZG Series Double Cone Vacuum Dryer (Also can be used as mixer) | 27 |
| GE-YZG/FZG Series Vacuum Dryer | 28 |
| GE-XDG Intelligent - Laboratory Vacuum Freeze Dryer | 29 |
| GE-DG Integral Type Vacuum Freeze Dryer | 31 |
| GE-SDG Split Type Vacuum Freeze Dryer | 33 |
| GE-FDG Pharmaceutical Vacuum Freeze Dryer | 35 |

02

Solid Dosage Equipment

| | |
|---|----|
| GE-DY Single Punch Tablet Press | 37 |
| GE-Y Series Automatic Tablet Pressing Machine | 38 |
| GE-HY Flower Basket Type Tablet Pressing Machine | 41 |
| GE-GY High Speed Tablet Pressing Machine | 42 |
| GE-GB Series High Efficiency Tablet Coating Machine | 45 |
| Accessory Equipment For Tablet Coater | 47 |
| GE-JB Simple Tablet Coating Machine | 48 |
| GE-SP Tablet Deduster | 49 |
| GE-BJ Semi-Automatic Capsule Filling Machine | 50 |
| GE-J Series Automatic Capsule Filling Machine | 51 |
| GE-JPG Series Capsule Polishing Machine | 53 |
| GE-YZJ Tablet Soft Capsule Printer | 54 |

03

03

Medicine Packing Equipment

| | |
|--|----|
| GE-ZP Series Bottle Turn Table | 55 |
| GE-LP Series Bottle Unscrambler | 56 |
| GE-QX Series Bottle Air Cleaning Machine | 57 |
| GE-BS Series Semi-Automatic Capsule Counting Machine | 58 |
| GE-S Series Electronic Capsule Counting Machine GE | 59 |
| GS/MS Series Desiccant/Cotton Inserting Machine GE | 60 |
| CG/YX Series Automatic Capping Machine | 61 |
| GE-LF Induction Sealing Machine | 62 |
| GE-YDT/PT/TB/WT Automatic Labeling Machine | 63 |
| GE-PTG Effervescent Tablets Tube Packing Machine GERTB | 64 |
| Sleeve Labeling Machine | 65 |
| GE-RP Automatic Strip Packing Machine | 66 |
| GE-P Blister Packing Machine | 67 |
| GE-GP High Speed Blister Packing Machine | 69 |
| GE-TP Series De-Blistering Machine | 70 |
| GE-LB Automatic Sachet Packing Machine | 71 |
| GE-GD Automatic Premade Bag Packing Machine GEFGJ | 72 |
| Powder Bottle Filling Machine | 73 |
| GE-WZH Series Automatic Cartoning Machine | 79 |

04

Ointment Processing Equipment

| | |
|--|----|
| GE-RZ Series Vacuum Emulsifying Machine | 74 |
| GE-30RG Semi Automatic Tube Filling And Sealing Machine GERG | 77 |
| Automatic Tube Filling And Sealing Machine | 78 |

05

Liquid Dosage And Packing Equipment

| | |
|--|----|
| GE-RJ Soft Gelatin Encapsulation Machine | 80 |
| Accessory Equipment For Soft Gelatin Encapsulation Machine | 81 |
| GE-GX Automatic Liquid Filling And Capping Machine | 83 |
| GE-SP Automatic Plastic Ampoule Liquid Filling And Sealing Machine GE- | 84 |
| YGF Prefilled Plastic Syringe Filling And Plugging Machine | 85 |
| GE-AGLX Ampoule Washing, Drying Filling And Sealing Linkage Line GE- | 87 |
| XGS Vial Washing, Drying Filling And Sealing Linkage Line | 88 |

04

GE-CSJ Series Coarse Crusher

Introduction

This machinery is mainly applicable for the pharmacy, the chemical industry, metallurgy industry, and the foodstuff industry, etc. It specially grinds the hard and solid materials including the plastic, copper wires, discarded type and so on. It also can be used as the corollary equipment for fine grinding process.

It is an ideal equipment for rough crushing with high efficiency and overcomes some abuses of the vertical machine, such as the locked moving cutter, the left material in the shell, the low efficiency, etc.

Features

The coarse crusher for the horizontal crushing structure, the material from the hopper into the crushing chamber, the use of rotating knife and fixed knife impact, shear and get crushed by the rotation of the centrifugal force, the material automatically flow to the exit. The machine is designed according to the "GMP" standard. The whole machine is made of stainless steel. The structure is simple, the cleaning is convenient and the noise is low. It is the most ideal equipment in the roughing machine.



Technical Data:

| Data \ Model | GE-50CSJ | GE-300CSJ | GE-400CSJ | GE-600CSJ | GE-800CSJ |
|------------------------------|-------------|--------------|---------------|---------------|----------------|
| Production capacity (kg/h) | 10-100 | 50-200 | 80-300 | 150-300 | 80-300 |
| Feed size(mm) | ≤50 | ≤100 | ≤100 | ≤100 | ≤100 |
| Crush size(mm) | 2-20 | 2-20 | 2-20 | 2-20 | 2-20 |
| Main speed(r/min) | 500 | 500 | 500 | 400 | 400 |
| Power(kw) | 1.5 | 3 | 4 | 7.5 | 22 |
| Weight(kg) | 100 | 150 | 200 | 300 | 600 |
| Overall dimensions L×W×H(MM) | 550×580×880 | 650×730×1240 | 900×1000×1330 | 960×1100×1700 | 1540×1340×2000 |

GE-FS Series Universal Crusher

Working Principle

The machine uses the high speed relative movement of the movable teeth to crush the material through the comprehensive action of the disc impact, friction and the impact between the materials. The machine is simple in structure, firm, stable in operation and good in crushing effect. The crushed material can be directly removed from the grinding chamber of the main machine. The particle size can be obtained by changing the screen with different apertures. The inner wall of the casing is machined to smooth surface, which changes the phenomenon of rough inner wall and powder deposition of previous models, and makes the production of medicine, food and chemical industry more in line with the national standard and meet the requirements of "GMP".



Technical Data:

| Data \ Model | GE-150FS | GE-300FS | GE-400FS | GE-500FS | GE-600FS | GE-1000FS |
|------------------------------|----------------|----------------|----------------|----------------|------------------|------------------|
| Production capacity(kg/h) | 20-150 | 30-300 | 40-400 | 80-500 | 100-600 | 80-1000 |
| Main speed (r/min) | 4500 | 3800 | 3400 | 2900 | 2400 | 2200 |
| Feed size(mm) | <6 | <10 | <12 | <12 | <15 | <15 |
| Crush size | 12-120 | 12-120 | 12-120 | 12-120 | 12-120 | 12-110 |
| Power(kw) | 4 | 5.5 | 7.5 | 11 | 22 | 37 |
| Weight(kg) | 150 | 250 | 280 | 350 | 400 | 600 |
| Overall dimensions L×W×H(mm) | 670×670×1120mm | 700×700×1340mm | 750×820×1400mm | 840×860×1550mm | 1000×1000×1980mm | 2400×1100×2000mm |

GE-CFS Series Superfine Pulverizer

Working Principle

The machine is composed of feeder, grading wheel, pulverizing blades, gears, pulverizing motor, discharging gate, fans, collection box, dust collection box and etc. Any raw material, being fed into the grind chamber through the upper feeder is pulverized by high-speed running blades. The fineness of the finished products is regulated via the distance adjustment of grading wheel and grading plate. The high speed running fans will lead those pulverized material from grinding chamber to discharge port via negative pressure while those unpulverized remained in the chamber. The dust from grinding is filtered and recycled via the cloth bag or filter of the dust absorption box. The whole machine designed according to GMP standard, is made of stainless steel, with the features of easy structure, convenient operation and cleaning, low noise and high capacity, avoiding dust flying in production.

Innovative Technology

The machine is applied in industries such as pharmaceuticals foodstuff, chemicals and etc with features of cool air and no sieve or screen. It is not limited by the viscosity, hardness, softness or fiber shape of the raw materials and has good effect to all materials, especially to those Chinese herbal medicines with fibers and those with oil.



Technical Data:

| Model | GE-100CFS | GE-200CFS | GE-300CFS |
|------------------------------|------------------|------------------|------------------|
| Production capacity(kg/h) | 10-100 | 20-200 | 50-300 |
| Feed size(mm) | ≤5 | ≤10 | ≤12 |
| Crush size | 20-250 | 20-250 | 20-250 |
| Crush motor(mm) | 5.5 | 7.5 | 11 |
| Aggregate motor(kw) | 1.5 | 2.2 | 3 |
| Weight(kg) | 320 | 550 | 600 |
| Overall dimensions L×W×H(mm) | 1330×1410×2050mm | 1450×1450×2100mm | 1600×1450×2200mm |

GE-SH Series Three Dimensional Mixing Machine

Innovative Technology

It is a high efficient mixing equipment, used for mixing powder and particle materials in pharmaceutical, food, chemical, light industry, and scientific research etc. The mixing rate can reach up to 99.9%. The machine with compact structure, each part of drum is transited by arc and polished precisely, meet the GMP requirements.



Technical Data:

| Model | GE-5SH | GE-100SH | GE-200SH | GE-400SH | GE-600SH | GE-800SH | GE-1000SH | GE-1500SH |
|-------------------------|---------------|----------------|----------------|----------------|----------------|----------------|----------------|----------------|
| Volume(L) | 5 | 100 | 200 | 400 | 600 | 800 | 1000 | 1500 |
| Max Loading Volume(L) | 4.5 | 90 | 180 | 360 | 540 | 720 | 900 | 1350 |
| Max Loading Weight(kg) | 1.5-2.7 | 30-54 | 50-108 | 100-216 | 150-324 | 200-432 | 250-540 | 400-810 |
| Revolution (r/min) | 0-20 | 0-20 | 0-15 | 0-15 | 0-13 | 0-10 | 0-10 | 0-9 |
| Power(kw) | 0.25 | 1.5 | 2.5 | 4 | 5.5 | 7.5 | 11 | 15 |
| Overall Dimensions (mm) | 600×1000×1000 | 1250×1800×1550 | 1450×2000×1550 | 1650×2200×1550 | 1850×2500×1750 | 2100×2650×2000 | 2150×2800×2100 | 2300×3200×2500 |
| Weight (kg) | 100 | 800 | 1200 | 1200 | 1500 | 1700 | 1800 | 2400 |

GE-VH V-Type Mixer

Innovative Technology

V-type Mixer are commonly used in pharmaceutical, nutraceutical, chemical, food and related industries to mix dried powder and granules. This Mixer has the following distinguishing features: No blind angle in the V-type, no accumulation of materials, high speed I-bar, efficient and short mixing time. The housing are made of stainless steel. The V-type have elegant appearance the charging of materials can be made either by manual operation or through pneumatic vacuum system. For discharging, rotating valves and rapid swivel heads are adopted.



Technical Data:

| Model | GE-5VH | GE-8VH | GE-14VH | GE-20VH | GE-30VH | GE-50VH | GE-100VH | GE-200VH | GE-300VH | SED-500VH |
|---------------------------|-------------|-------------|-------------|---------------|--------------|---------------|---------------|---------------|---------------|---------------|
| Total Volume (L) | 5 | 8 | 14 | 20 | 30 | 50 | 100 | 200 | 300 | 500 |
| Working Volume(L) | 2 | 3.2 | 5.6 | 8 | 12 | 30 | 40 | 120 | 180 | 300 |
| Capacity (kg/batch) | 2 | 2.5 | 4 | 6 | 8 | 14 | 28 | 40 | 60 | 80 |
| Motor Power (KW) | 0.55 | 0.55 | 0.55 | 0.55 | 0.75 | 0.75 | 0.75 | 1.1 | 1.1 | 2.2 |
| Drum Rotate Speed (r/min) | 24 | 24 | 20 | 20 | 20 | 12 | 12 | 12 | 12 | 12 |
| Dimension (mm) | 560×270×560 | 610×280×740 | 780×350×850 | 1090×340×1055 | 1250×350×910 | 1310×560×1250 | 1750×600×1620 | 2430×600×2200 | 2050×710×1700 | 2370×100×1850 |

GE-CH Series Trough Shape Mixer

Working Principle

It is used for mixing powder or wet material, so that different proportion of main and auxiliary materials can be mixed evenly. The contact area between the machine and the material is made of stainless steel. The clearance between the blade and the barrel is small, and there is no dead angle. The two ends of the mixing shaft are equipped with a sealing device, which can prevent the material from falling outside, and the hopper adopts the button to move and control, and the discharging is convenient. Widely used in pharmaceutical, chemical, food and other industries.



Technical Data:

| Model | Total volume(m ³) | Capacity (Kg/ batch) | Dimension(mm) | Mixing Speed (rpm) | Mixing Power (kw) | Discharge Power(kw) |
|-----------|-------------------------------|----------------------|----------------|--------------------|-------------------|---------------------|
| GE-150CH | 0.15 | 30 | 1480×1190×600 | 24 | 3 | 0.55 |
| GE-200CH | 0.2 | 40 | 1480×1200×600 | 24 | 4 | 0.55 |
| GE-300CH | 0.3 | 60 | 1820×1240×680 | 24 | 5.5 | 1.5 |
| GE-500CH | 0.5 | 120 | 2000×1240×720 | 20 | 11 | 2.2 |
| GE-750CH | 0.75 | 150 | 2300×1260×800 | 19 | 15 | 2.2 |
| GE-1000CH | 1.0 | 270 | 2500×1300×860 | 19 | 15 | 3 |
| GE-1500CH | 1.5 | 400 | 2600×1400×940 | 14 | 18.5 | 3 |
| GE-2000CH | 2 | 550 | 3000×1500×1160 | 12 | 22 | 4 |
| GE-2500CH | 2.5 | 630 | 3500×1620×1250 | 12 | 22 | 5.5 |
| GE-3000CH | 3 | 750 | 3800×1780×1500 | 10 | 30 | 5.5 |

GE-SZ Series High Speed Wet Mixing Granulator

Innovative Technology

- With consistent programmed technology (Touch screen is optional), the machine can assure the stable quality and with easy operation.
- Adopt frequency speed adjustment to control the stirring blade and cutter, easy to control the particle size.
- With the rotating shaft hermetically filled with air, it can prevent all dust from compact.
- With automatic lifting cover, the tank outlet can be connected with drying device.



Technical Data:

| Item | GE-600SZ | GE-400SZ | GE-300SZ | GE-200SZ | GE-100SZ | GE-50SZ | GE-30SZ | GE-10SZ |
|--|---|-------------------|-------------------|------------------|------------------|------------------|------------------|------------------|
| Total Volume | 600L | 400L | 300L | 200L | 100L | 50L | 30L | 10L |
| Work Capacity | 150-400L | 100-280L | 80-220L | 60-150L | 25-65L | 12-35L | 6-20L | 2-6L |
| Feed Rate / Specific Gravity 0.5g/m ³ | 75-200 kg/batch | 50-140 kg/batch | 40-110 kg/batch | 30-75 kg/batch | 15-40 kg/batch | 8-20kg /batch | 3-10kg /batch | 1-3kg /batch |
| Operation Time | Mix about 2 minutes to granulate for about 7-14 minutes / lots. | | | | | | | |
| Granularity | About Φ0.14-Φ0.15mm (12 mesh -100 mesh) | | | | | | | |
| Mixing Motor | 30KW | 22KW | 18.5KW | 15KW | 7.5KW 6 pole | 5.5KW 6 pole | 3KW 6 pole | 2.2KW 6 pole |
| Mixing Rotate Speed | 25-220rpm | 25-220rpm | 25-220rpm | 30-260rpm | 30-300rpm | 40-400rpm | 50-500rpm | 50-500rpm |
| Granulating Motor | 11KW | 7.5KW | 5.5KW | 4KW | 3KW | 1.5KW | 1.1KW | 0.75KW |
| Granulating Rotate Speed | 50-3000rpm | 50-3000rpm | 50-3000rpm | 50-3000rpm | 50-3000rpm | 50-3000rpm | 50-3000rpm | 50-3000rpm |
| Overall Dimension | 2980×1200 ×2500mm | 2420×1060 ×2150mm | 2420×1060 ×2150mm | 2180×810 ×1950mm | 1760×600 ×1600mm | 1750×600 ×1620mm | 1450×530 ×1340mm | 1280×530 ×1320mm |
| Weight | 3880kg | 1900kg | 1800kg | 1350kg | 800kg | 500kg | 400kg | 330kg |

GE-GF Fluid Bed Dryer

Working Principle

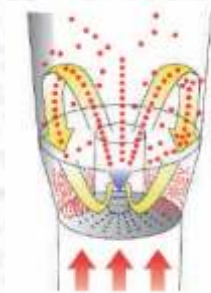
Purified and heated air is introduced from the bottom through suction fan and passed through the screen plate of raw material. In the work chamber, the state of fluidization is formed through stirring and negative pressure. The moisture is evaporated and removed rapidly and the raw material is dried quickly.



- **Drying:** wet powder or granules drying.



- **Top Spray:** spray binder on powder for granulation.



- **Bottom Spray:** pellet suspension coating or film coating, enteric coating.
- **Side Spray:** pellet powder coating, suspension coating or film coating, enteric coating. (aqueous or organic solvent are applicable)

PRODUCT PARAMETERS

■ Fluid Bed Dryer

| Item | Unit | GE-GF Series Fluidized Dryer | | | | | | | | GE-GFZ Series Fluidized Granulator | | | | | | | | |
|--------------------------|----------|------------------------------|----------|----------|----------|----------|----------|-----------|-----------|------------------------------------|----------|----------|-----------|-----------|-----------|-----------|------------|------------|
| | | GE-100GF | GE-200GF | GE-300GF | GE-420GF | GE-500GF | GE-670GF | GE-1000GF | GE-1500GF | GE-12GFZ | GE-22GFZ | GE-45GFZ | GE-100GFZ | GE-220GFZ | GE-420GFZ | GE-670GFZ | GE-1000GFZ | GE-1500GFZ |
| Model | / | | | | | | | | | | | | | | | | | |
| Volume | L | 100 | 200 | 300 | 420 | 500 | 670 | 1000 | 1500 | 12 | 22 | 45 | 100 | 220 | 420 | 670 | 1000 | 1500 |
| Capacity | Kg/batch | 60 | 100 | 120 | 150 | 200 | 300 | 500 | 100 | 45 | 6 | 20 | 45 | 90 | 160 | 300 | 450 | 750 |
| Consume of steam | Kg/h | 140 | 170 | 220 | 240 | 282 | 366 | 451 | 800 | 15 | 23 | 42 | 70 | 141 | 211 | 282 | 366 | 451 |
| Amount of compressed air | m³/min | 0.6 | 0.9 | 0.9 | 0.9 | 1.3 | 1.5 | 1.75 | 1.75 | 0.9 | 0.9 | 0.9 | 0.9 | 1.0 | 1.0 | 1.1 | 1.5 | 1.5 |
| Fan power | KW | 7.5 | 11 | 15 | 18.5 | 22 | 30 | 30 | 75 | 3 | 4 | 5.5 | 7.5 | 11 | 18.5 | 22 | 30 | 45 |
| Temperature | °C | -120°C (Controllable) | | | | | | | | -120°C (Controllable) | | | | | | | | |
| Operation time | Min | 15-30 | | | | | | | | 45-90 | | | | | | | | |
| Host Height | M | 2.7 | 2.9 | 2 | 9 | 3.1 | 3.6 | 3.85 | 5.8 | 2.1 | 2.1 | 2.5 | 2.5 | 3 | 3.3 | 3.8 | 4 | 4.4 |

| Item | Unit | GE-GFB Series Fluidized Coater | | | GE-GFB Series Fluidized Coater | | | | |
|--------------------------|----------|--------------------------------|----------|-----------|--------------------------------|-----------|-----------|------------|------------|
| | | GE-22GFB | GE-45GFB | GE-100GFB | GE-220GFB | GE-420GFB | GE-670GFB | GE-1000GFB | GE-1500GFB |
| Model | / | | | | | | | | |
| Volume | L | 22 | 45 | 100 | 220 | 420 | 670 | 1000 | 1500 |
| Capacity | Kg/batch | 6 | 20 | 36 | 72 | 140 | 240 | 360 | 550 |
| Consume of steam | Kg/h | 23 | 42 | 70 | 140 | 211 | 282 | 366 | 450 |
| Amount of compressed air | m³/min | 0.3 | 0.3 | 0.4 | 0.6 | 0.8 | 0.9 | 1.5 | 2.0 |
| Fan power | KW | 2.2 | 4 | 5.5 | 11 | 18.5 | 22 | 30 | 45 |
| Temperature | °C | -120°C (Controllable) | | | -120°C (Controllable) | | | | |
| Operation time | Min | 15-30 | | | 15-30 | | | | |
| Host Height | M | 2.1 | 2.3 | 2.5 | 3 | 3.3 | 3.8 | 4 | 4.4 |

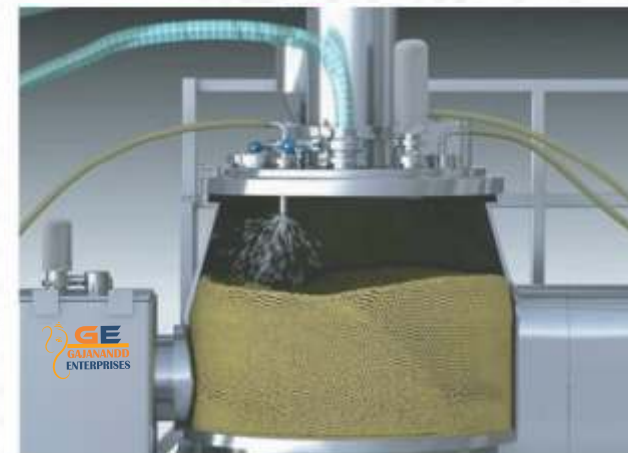
GE-ZS Solid Preparation Granulation Production Line

What is Granulation

Granulation is the process of joining multiple particles or grains together, typically using a binding agent although mechanical force has been used to bond the particle together as well. This brief will provide the reader with a basic understanding of the options available for wet granulation as well as the processing implications. Before moving on, the terminology of granulation versus agglomeration should be addressed. In a purely scientific sense these are synonymous but in the pharmaceutical industry, agglomeration is often used to describe over-granulation or forming granules too large or out of specification.

Why Granulate Pharmaceuticals

In pharmaceutical industry, granulation is the key step to prepare any type of tablets, pellets, powder for suspension and related powder products. The most common reason to granulate pharmaceuticals is to prepare the material to obtain the physical properties needed to facilitate compression into a tablet. The binding agent works to hold the individual granules together so the tablet, after ejection from a tablet press die, maintains its integrity. Other reasons are generally centered on improving the processing or handling of the powdered material. Un-granulated material is often very dusty, creating housekeeping problems, operator exposure issues and product loss. Granulated materials flow better, improving processing speeds and yields. Lastly, physical characteristics such as bulk density, porosity, hardness, particle size distribution, morphology and robustness can be achieved using this process. In addition to the above, granulation can be used to combine (or mix) several ingredients, where each granule is a combination of several ingredients such as an API (active pharmaceutical ingredient), excipient, binder, disintegrant and lubricant.



Wet Granulator Process



Fluidized Dryer Process

| Equipment | Model Data | GE-3ZS | GE-5ZS | GE-10ZS | GE-20ZS | GE-30ZS | GE-60ZS | GE-100ZS | |
|-------------------------|----------------------------|---------|--------|---------|---------|---------|---------|----------|----|
| Wet Mixer | Capacity | 3 | 5 | 10 | 20 | 30 | 60 | 100 | |
| | Cutting power | 1.1 | 1.5 | 2.2 | 2.2 | 3 | 5.5 | 5.5 | |
| | Speed | 0-2900 | | | | | | | |
| | Mixing power | 2.2 | 3 | 4 | 5.5 | 7.5 | 11 | 15 | |
| | Speed | 0-600 | 0-600 | 0-600 | 0-500 | 0-400 | 0-200 | 0-200 | |
| | volume | 10 | 20 | 30 | 60 | 100 | 200 | 300 | |
| | Compressed air pressure | 0.4-0.6 | | | | | | | |
| | Compressed air consumption | 0.25 | 0.25 | 0.3 | 0.3 | 0.5 | 0.6 | 0.9 | |
| Wet Granulator | Granulator Power | 0.55 | 0.55 | 0.75 | 0.75 | 1.1 | 1.5 | 2.2 | |
| | speed | 0-1400 | | | | | | | |
| | Screen hole diameter | 8-12 | | | | | | | |
| Fluidized Dryer | Cylinder diameter | 400 | 550 | 500 | 600 | 800 | 1000 | 1100 | |
| | Volume | 20 | 25 | 40 | 70 | 100 | 220 | 360 | |
| | Induced draft fan power | 4 | 5.5 | 7.5 | 7.5 | 7.5 | 11 | 10.5 | |
| | Air volume | 2062 | 2504 | 2844 | 2844 | 2844 | 5394 | 5153 | |
| | Wind pressure | 4447 | 4112 | 5517 | 5517 | 5517 | 5381 | 9055 | |
| | Electric heating power | 6 | 9 | 15 | 27 | 36 | 45 | 54 | |
| | Steam heat exchange area | | | | | | | 45 | 60 |
| | Steam pressure | | | | | | | | |
| | Steam consumption | | | | | | | 211 | |
| | Compressed air pressure | 0.4-0.6 | | | | | | | |
| | Compressed air consumption | 0.6 | 0.9 | | 1.1 | 1.1 | 1.1 | 1.5 | |
| | Moisture after drying | 0.5 | | | | | | | |
| Dry Granulator | Granulator Power | 0.55 | 0.55 | 0.75 | 0.75 | 1.1 | 1.5 | 2.2 | |
| | Speed | 0-1400 | | | | | | | |
| | Screen hole diameter | 1-3 | | | | | | | |
| Pneumatic Vacuum Feeder | Model | QVC-1 | | | | QVC-2 | QVC-3 | | |
| | Compressed air pressure | 0.6 | | | | | | | |
| | Compressed air consumption | 360 | | | | 360 | 720 | | |
| | Transport capacity(kg/h) | 100-600 | | | | 100-600 | 300-800 | | |

| GE-120ZS | GE-60ZS | GE-100ZS | GE-120ZS | GE-150ZS | GE-200ZS | GE-250ZS | GE-300ZS | GE-500ZS |
|----------|---------|----------|----------|----------|----------|----------|----------|----------|
| 120 | 60 | 100 | 120 | 150 | 200 | 250 | 300 | 500 |
| 7.5 | 5.5 | 5.5 | 7.5 | 11 | 11 | 15 | 15 | 30 |
| 0-2900 | | | | | | | | |
| 22 | 11 | 15 | 18.5 | 22 | 30 | 37 | 45 | 75 |
| 0-200 | 0-200 | 0-200 | 0-200 | 0-200 | 0-150 | 0-150 | 0-120 | 0-100 |
| 400 | 200 | 300 | 400 | 500 | 600 | 800 | 1000 | 1500 |
| 0.4-0.6 | | | | | | | | |
| 0.9 | 1.5 | 1.5 | 1.5 | 1.5 | 1.8 | 1.8 | 1.8 | 2.1 |
| 2.2 | 0.9 | 1.1 | 1.5 | 1.5 | 2.2 | 3 | 4 | 5.5 |
| 0-1400 | | | | | | | | |
| 8-12 | | | | | | | | |
| 1200 | 1000 | 1100 | 1200 | 1300 | 1400 | 1500 | 1000 | 1800 |
| 420 | 220 | 360 | 420 | 550 | 670 | 800 | 1000 | 1500 |
| 10.5 | 15 | 18.5 | 22 | 22 | 30 | 45 | 45 | 55 |
| 5153 | 6394 | 5153 | 7400 | 7400 | 6978 | 11883 | 11883 | 9988 |
| 9055 | 5381 | 9055 | 7185 | 7185 | 8184 | 8915 | 8915 | 10426 |
| 54 | 36 | 45 | 63 | 63 | 72 | 108 | 135 | 180 |
| 60 | 45 | 60 | 80 | 80 | 90 | 120 | 120 | 200 |
| 0.4-0.6 | | | | | | | | |
| 211 | 140 | 211 | 211 | 260 | 282 | 366 | 381 | 465 |
| 0.4-0.6 | | | | | | | | |
| 0.9 | 0.6 | 0.9 | 0.9 | 1.1 | 1.1 | 1.1 | 1.5 | 1.5 |
| 0.5 | | | | | | | | |
| 2.2 | 1.1 | 1.5 | 1.5 | 1.5 | 2.2 | 3 | 4 | 5.5 |
| 0-1400 | | | | | | | | |
| 1-3 | | | | | | | | |
| QVC-3 | QVC-2 | QVC-3 | QVC-3 | QVC-4 | QVC-4 | QVC-4 | QVC-5 | QVC-5 |
| 0.6 | | | | | | | | |
| 720 | 360 | 720 | 720 | 1440 | 1440 | 1440 | 2880 | 2880 |
| 300-800 | 100-600 | 300-800 | 300-800 | 600-2000 | 600-2000 | 600-2000 | 900-3000 | 900-3000 |

GE-ZGF Series Continues Vibrating-Fluidizing Dryer

Innovative Technology

- The vibration source is vibration motor. It features constant operation, convenient maintenance, low noise and long life.
- Uniform fluid-bed, without the phenomenon of gap and blowing out. The uniform dry and cool product can be got.
- Good adjustable and wide applicability. The change of thickness of material layer, moving speed in the machine and full amplitude can adopt continuous adjustment.
- Less damage to the surface of material. It can be used for drying material that is easy to broken. If the granule of material is unregulated, but the work effect is not be affected
- Adopt full sealed structure. It is effective to protect cross infection between material and air. The operation environment is clean.
- High mechanical and thermal efficiency and good effect of energy saving. Compared with ordinary drying equipment, it can save 30 ~ 60% energy.



Technical Data:

| Model | Fluidized bed area | Inlet air temperature | Outlet air temperature | Evaporation capacity | Vibrating motor | |
|----------------|--------------------|-----------------------|------------------------|----------------------|-----------------|----------|
| | | | | | Model | Power KW |
| GE 3x0.3ZGF | 0.9 | 70-140 | 40-70 | 20-35 | ZDS31-6 | 0.8x2 |
| GE 4.5x0.3ZGF | 1.35 | 70-140 | 40-70 | 35-50 | ZDS31-6 | 0.8x2 |
| GE 4.5x0.45ZGF | 2.025 | 70-140 | 40-70 | 50-70 | ZDS32-6 | 1.1x2 |
| GE 4.5x0.6ZGF | 2.7 | 70-140 | 40-70 | 70-90 | ZDS32-6 | 1.1x2 |
| GE 6x0.45ZGF | 2.7 | 70-140 | 40-70 | 80-100 | ZDS41-6 | 1.5x2 |
| GE 6x0.6ZGF | 3.6 | 70-140 | 40-70 | 100-130 | ZDS41-6 | 1.5x2 |
| GE 6x0.75 ZGF | 4.5 | 70-140 | 40-70 | 120-140 | ZDS42-6 | 2.2x2 |
| GE 6x0.9ZGF | 5.4 | 70-140 | 40-70 | 140-170 | ZDS42-6 | 2.2x2 |
| GE 7.5x6 ZGF | 4.5 | 70-140 | 40-70 | 130-150 | ZDS42-6 | 2.2x2 |
| GE 7.5x0.75ZGF | 5.625 | 70-140 | 40-70 | 150-180 | ZDS51-6 | 3.0x2 |
| GE 7.5x0.9 ZGF | 6.75 | 70-140 | 40-70 | 160-210 | ZDS51-6 | 3.0x2 |
| GE 7.5x1.2 ZGF | 9 | 70-140 | 40-70 | 200-260 | ZDS51-6 | 3.7x2 |

GE-GZ Dry Granulator

Introduction

This is a new equipment to make granules directly from the target material using the crystal water in the material. The finished granules can be made to troches or capsules. It adopts the electromagnetic timing and features the simple structure, stable capability, easy cleaning, convenient maintenance.

Characteristic

Dry powder particles with uniform density, good disintegration, high yield.
 Special feeding structure to ensure effective feeding.
 Roller cooling water circulation, to ensure that there will be no sticky roll phenomenon.
 Do not need water or ethanol and other wetting agent, do not need a two heating drying, less process, high efficiency, low cost.
 Using advanced electric hydraulic, simple and reliable operation, high degree of automation.
 Sealing operation without pollution, meet the health requirements of the drug.



Technical Data:

| Model | GE-10GZ | GE-60GZ | GE-80GZ | GE-100GZ | GE-200GZ |
|--|--|---------|---------|----------|----------|
| Capacity (Kg/h) | 2-10 | 20-60 | 30-80 | 50-100 | 80-200 |
| Roll Size (mm) | 200x25 | 200x80 | 200x100 | 200x120 | 250x200 |
| Roll Max Pressure (T) | 5x2 | 10x2 | 10x2 | 15x2 | 25x2 |
| Roll Speed (rpm) | 2-20 (adjustable) | | | | |
| Feeding Speed (rpm) | 6-60 (adjustable) | | | | |
| Roll Drive Motor (Kw) | 4 | 4 | 7.5 | 11 | 15 |
| Feed Drive Motor (Kw) | 0.75 | 1.1 | 2.2 | 2.2 | 3 |
| Granule Drive Motor (Kw) | 0.75 | 1.1 | 2.2 | 2.2 | 3 |
| Oil Pump Drive Motor (Kw) | 0.5 | 0.75 | 1.1 | 1.1 | 2.2 |
| Max. working pressure of Hydraulic (Mpa) | 10 | 20 | 25 | 30 | 50 |
| Roller And Feed Speed Regulation Type | Electromagnetic speed/variable frequency speed control | | | | |

GE-SF Vibrating Sifter

Introduction

A Vibrating sifter is an accessory found in various industries and laboratories whose function is to facilitate the separation, grading and scalping of materials based on the nature of their particle sizes. Basically, it can sieve particles you can use as a final product or for subsequent processes.



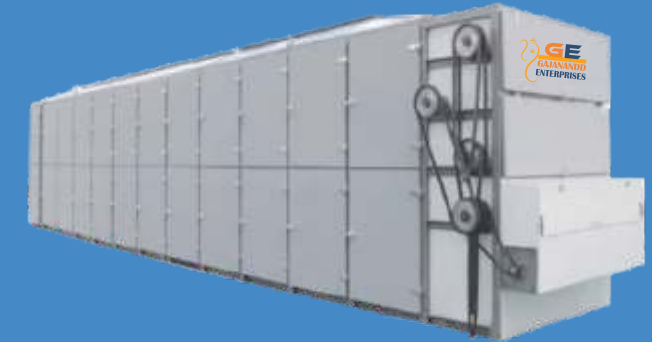
Technical Data:

| Model | GE-390SF-F | GE-580SF-F | GE-760SF-F | GE-910SF-F | GE-1120SF-F | GE-1420SF-F | GE-1720SF-F | GE-1920SF-F |
|--|------------|------------|------------|------------|-------------|-------------|-------------|-------------|
| Dia. of Effective screen (mm) | Φ390 | Φ580 | Φ760 | Φ910 | Φ1120 | Φ1420 | Φ1720 | Φ1920 |
| Effective screening area (m ²) | 0.1207 | 0.2289 | 0.4183 | 0.6359 | 0.9499 | 1.5386 | 2.2687 | 2.7922 |
| 1-3S Motor Power (KW) | 0.25 | 0.37 | 0.55 | 0.75 | 1.1 | 3.0 | 4.0 | 5.0 |
| 4-5SMotor Power (KW) | 0.37 | 0.55 | 0.75 | 1.1 | 1.5 | 4.0 | 5.0 | 5.0 |
| Layer No. | 1-5 | 1-5 | 1-5 | 1-5 | 1-5 | 1-5 | 1-5 | 1-5 |

GE-DW Series Belt Dryer

Working Principle

The materials are evenly displayed on the mesh-belt by the material feeder. The mesh-belt uses generally 12-60 mesh stainless wire net and it is drawn and moved inside the drier by a transmitting device. The drier is composed of several units. For each unit, the hot air is circulated separately. Some exhausted gas is discharged with a special moisture elimination blower. The waste gas is controlled through an adjusting valve. The hot air passes through the mesh-belt to the top and this will complete the transmitting of heat and mass. The process will bring water away from the material. The mesh-belt moving slowly, running speed can be easily adjusted according to the material temperature. The final products after the drying will fall into the material collector continuously. The upper and lower circulating units can be freely equipped according to the users requirements. The unit number can be also be selected according to the requirements.



Technical Data:

| Model | GE-1.2-8 DW | GE-1.2-10 DW | GE-1.6-8DW | GE1.6-10DW | GE-2-8 DW | GE-2-10DW |
|--|-------------|--------------|------------|------------|-----------|-----------|
| Unit number | 4 | 5 | 4 | 5 | 4 | 5 |
| Belt width(m) | 1.2 | 1.2 | 1.6 | 1.6 | 2 | 2 |
| Drying section length(m) | 8 | 10 | 8 | 10 | 8 | 10 |
| Thickness of the material to be covered(mm) | 10-80 | | | | | |
| Temperature(°C) | 60-130 | | | | | |
| Steam pressure (Mpa) | 0.2-0.8 | | | | | |
| Steam consumption(Kg/h) | 120-300 | 150-375 | 150-375 | 170-740 | 180-500 | 225-600 |
| Drying time(h) | 0.2~1.2 | 0.25~1.5 | 0.2~1.2 | 0.25~1.5 | 0.2~1.2 | 0.25~1.5 |
| Drying efficiency (Kg, H ₂ O/h) Total | 60~160 | 80~220 | 75~220 | 95~250 | 100~260 | 120~300 |
| power of fan(kW) | 9.9 | 12.1 | 9.9 | 12.1 | 18.2 | 22.2 |
| Total power of equipment(Kw) | 11.4 | 13.6 | 11.4 | 13.6 | 19.7 | 23.7 |

GE-PG Series High Speed Centrifugal Spray Dryer

Working Principle

After filtering and heating, the air enters into the air distributor at the top of the dryer. Spiral-shaped hot air evenly into the drying chamber. By passing through the high-speed centrifugal spray at the top of the tower, the material liquid will rotate and be sprayed into the extremely fine mist liquid beads. Through the very short time of contacting the heat air, the materials can be dried into the finished products. The finished products will separator. The waste gas will be discharged from blower.



Innovative Technology

- At a high speed of drying, after the spraying of the liquid material, the surface area of the material will be increased greatly. In the hot-air flow, 95%-98% of water can be evaporated at a moment. The time of completing the drying needs only several seconds.
- The product has good uniformity, fluidity and solubility, high product purity and good quality.
- The production procedures are simple and the operation and control are easy. The liquids with the moisture content of 40-60% (for special materials, the contents may reach 90%), can be deied into the power or particle products once a time. After drying, there is no need to pulverize and sorting, so as to reduce the boperation procedures in the production and to enhance the product purity. The particle diameters, looseness and water content can be adjusted by changing the operating conditions in a certain scope. It is very convenient to carry out the contol and management.

Technical Data:

| Item parameter | Model GE-PG | | | | | |
|-----------------------------------|-----------------------------|---------------------|---------------------------------------|-----------|-----------|--------------------------------------|
| | 5 | 25 | 50 | 100 | 150 | 200-2000 |
| Inlet temperature | 140-350automatic control | | | | | |
| outlet temperature | 80-90 | | | | | |
| Maximum water evaporation | 5 | 25 | 50 | 100 | 150 | 20-2000 |
| Spray form | Compressed air transmission | mechanical drive | | | | |
| speed | 25000 | 18000 | 18000 | 18000 | 15000 | 8000-15000 |
| Atomizing disk diameter | 50 | 100 | 120 | 140 | 150 | 180-340 |
| heat source | electric | Electricity + steam | Electricity + steam, fuel oil and gas | | | Solved by the user |
| Maximum power of electric heating | 9 | 36 | 63 | 81 | 99 | |
| Lengthxwidth xheight | 1.8x0.93x2.2 | 3x2.7x4.26 | 3.7x3.2x5.1 | 4.6x4.2x6 | 5.5x4.5x7 | It depends on the specific situation |
| Dry powder recovery | ≥95 | | | | | |

GE-RXG Series Hot Air Circulation Oven

Working Principle

It is suitable for heating and dehumidification for pharmaceutical, chemical, food, light industry and heavy industry of raw materials and products. Such as raw materials, crude drugs, Chinese herbal decoction pieces, powders, granules, granules, packaging bottles of large and small pills, pigments, dyes, dehydrated vegetables, food, plastic resins, electrical components, baking paint, etc.

Innovative Technology

- Most of the hot air circulates in the box, with high thermal efficiency and energy saving.
- Using forced ventilation, there is an adjustable air distribution board in the box, and the material is evenly dried.
- Heat source can be steam, hot water, electricity, far infrared, a wide range of choices.
- The whole machine has low noise, balanced operation, automatic temperature control, convenient installation and maintenance.
- It has a wide range of applications and can dry various materials.



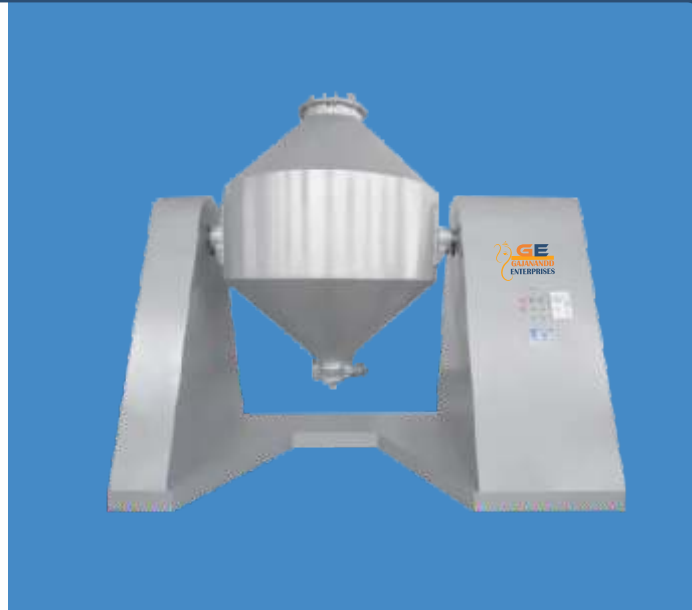
Technical Data:

| Model of Industry standard | Drying amount per time | Allocated power | Steam consumption | Heat dissipation area | Air volume | Temperature difference between upper and lower parts | Equipped with baking tray | Overall dimension | Supporting drying car |
|----------------------------|------------------------|-----------------|-------------------|-----------------------|------------|--|---------------------------|-------------------|-----------------------|
| GE-60 RXG | 60 | 0.45 | 10 | 10 | 3450 | ±2 | 24 | 1480×1100×1750mm | 1 |
| GE-120 RXG | 120 | 0.45 | 18 | 20 | 3450 | ±2 | 48 | 2300×1200×2000mm | 2 |
| GE-240 RXG | 240 | 0.9 | 36 | 40 | 6900 | ±2 | 96 | 2300×2200×2000mm | 4 |
| GE-360 RXG | 360 | 1.35 | 54 | 80 | 10350 | ±2 | 144 | 2300×3200×2000mm | 6 |
| GE-480 RXG | 400 | 1.0 | 72 | 100 | 13800 | ±2 | 102 | 4460×2200×2200mm | 0 |

GE-SZG Series Double Cone Vacuum Dryer (Also can be used as mixer)

Working Principle

1. Let heat source (for example, low pressure steam or heat conduct oil) pass through the sealed jacket. The heat will be transmitted to raw material to be dried through inner shell.
2. Under driving of power, the tank is rotated slowly and the raw material inside it is mixed continuously. The purpose of reinforced drying can be realized.
3. The raw material exists at the state of vacuum. The drop of team pressure makes the moisture (solvent) at the surface of raw material become saturation and will evaporate. The solvent will be discharged through vacuum pump an drecovered in time. The inner moisture (solvent) of raw material will infiltrate, evaporate and discharge continuously. The three processes are carried out unceasingly and the purpose of drying can be realized within a short time.



Innovative Technology

- When oil is used to heat, use automatic constant temperature control, It can be used for drying biology products and mine. Its temperature of operation can be adjusted from 20-160 C and within ±2 C.
- Compared with ordinary drier, its heat efficiency will be over 2 times.
- The heat is indirect, so the raw material can not be polluted. It is conformity with the requirement of GMP. It is easy in washing and maintenance.

Technical Data:

| Item | | Model | | | | | | | | | | |
|----------------------------------|----------------|-------------|------------|------------|------------|------------|------------|------------|------------|------------|------------|------------|
| Name | Unit | GE-100 SZG | GE-200 SZG | GE-350 SZG | GE-500 SZG | GE-750 SZG | GE-1000SZG | GE-1500SZG | GE-2000SZG | GE-3000SZG | GE-4500SZG | GE-5000SZG |
| Total volume | L | 100 | 200 | 350 | 500 | 750 | 1000 | 1500 | 2000 | 3000 | 4500 | 5000 |
| Working volume | L | ≤50 | ≤100 | ≤175 | ≤250 | ≤375 | ≤500 | ≤750 | ≤1000 | ≤1500 | ≤2250 | ≤2500 |
| Heating area | m ² | 1.16 | 1.5 | 2 | 2.63 | 3.5 | 4.61 | 5.58 | 7.5 | 9.6 | 13.8 | 15.2 |
| Speed | RPM | 6 | | | | | | 4 | 4 | 4 | | |
| Power | Kw | 0.75 | 1.1 | 1.5 | 2.2 | 2.2 | 3 | 4 | 5.5 | 7.5 | 15 | 18.5 |
| Height of rotating | mm | 1810 | 1910 | 2090 | 2195 | 2500 | 2665 | 2915 | 3055 | 3330 | 4210 | 4500 |
| Weight | Kg | 550 | 700 | 900 | 1100 | 1200 | 1300 | 1500 | 2000 | 3000 | 4000 | 4200 |
| Design pressure of inside tank | Mpa | -0.09-0.096 | | | | | | | | | | |
| Design pressure of inside jacket | Mpa | ≤0.3 | | | | | | | | | | |

GE-YZG/FZG Series Vacuum Dryer

Working Principle

It is well known that vacuum drying is to put raw material under the state of vacuum for heating and drying. If using vacuum to pump air and humidity out, the dry speed will be faster.

Innovative Technology

- Under the condition of vacuum, the boiling point of raw material will decrease and make the evaporation efficiency higher. Therefore for a certain amount of heat transfer, the conducting area of dryer can be saved.
- The heat source for evaporation may be low pressure steam or surplus heat steam.
- The heat loss is less.
- Before drying, the treatment of disinfection may be carried out. During the period of drying, there is no impurity material mixed. It is in conformity with the requirement of GMP.
- It belongs to static dryer. So the shape of raw material to be dried should not be destroyed

GE-YZG



GE-FZG



Technical Data:

| Name | Model | GE-4YZG | GE-6YZG | GE-8YZG | GE-5FZG | GE-5FZG | GE-12FZG |
|--|-------|---------------|---------------|----------------|----------------|----------------|----------------|
| Inside size of chamber(mm) | | Φ600×976 | Φ1000×1572 | Φ1400×2054 | 1500×1060×1220 | 1500×1220×1400 | 1500×1220×1600 |
| Outer size of chamber(mm) | | 1135×810×1020 | 1693×1190×150 | 2386×1657×1920 | 1720×1513×1924 | 2060×1513×1924 | 2060×1513×2124 |
| Layer of baking shelf | | 4 | 6 | 8 | 5 | 8 | 12 |
| Size of baking disk(mm) | | 81 | 102 | 102 | 122 | 122 | 122 |
| Number of baking disk | | 310×600×45 | 460×640×45 | 460×640×45 | 460×640×45 | 460×640×45 | 460×640×45 |
| Permitted pressure inside the pipe of | | 4 | 12 | 32 | 20 | 32 | 48 |
| baking shelf(Mpa) | | ≤0.784 | ≤0.784 | ≤0.784 | ≤0.784 | ≤0.784 | ≤0.784 |
| Temperature inside chamber(°C) | | ≤150 | ≤150 | ≤150 | ≤150 | ≤150 | ≤150 |
| Vacuum no load inside chamber (Mpa) | | -0.09-0.096 | | | | | |
| If not sue condensate, type and power of vacuum pump(KW) | | SK-1.5 4KW | SK-3 5.5KW | SK-6 11KW | SK-6 1.1KW | SK-6 1.1KW | SK-6 1.1KW |
| Weight of drying chamber(kg) | | 250 | 800 | 1000 | 1400 | 2100 | 2500 |

GE-XDG Intelligent - Laboratory Vacuum Freeze Dryer

Innovative Technology

- Fully automatic operation - from the pre-freeze - first drying - second drying - end discrimination - Auto gland Automatic re-pressed - Automatic defrost - Automatic shutdown.
- Double protection design - the machine is running due to operational errors, on the basis of protecting the product, but also protect the safety of the machine.
- Standard products - products temperature $\leq -55^{\circ}\text{C}$ cold trap temperature $\leq -75^{\circ}\text{C}$ vacuum degree $\leq 1\text{Pa}$.
- Modular product - by system configuration, modular manufacturing, maintenance and more professional.
- The end discriminant function - at the end of secondary drying, the program automatically enters end discrimination in the confirmation dried products, prompted to enter the next step.
- Sterile isolation design - reliable machine or sterile isolat on placement, user-friendly multi- site use.
- The whole process of vacuum control - provide the degree of vacuum drying phase variable control, automated operation.
- shelf pitch design-available shelf spacing variable function to facilitate large difference in height lyophilized product.
- A variety of extensions - eutectic point measurement, computer remote control, dew point measurement functions.



| Parameters | | Unit | GE-0.2XDG | GE-0.5XDG | GE-1XDG | GE-2XDG | GE-3XDG | |
|----------------------------------|----------------------------------|-----------------------|----------------------------|----------------|----------------|-----------------|-----------------|-------|
| Valid Area | | | 0.2 | 0.5 | 1 | 2 | 3 | |
| Capacity | Shelf Usable Area | m ² | 0.24 | 0.54 | 1.05 | 2.16 | 3.24 | |
| | Condenseer Capacity | Kg/B | 4 | 10 | 15 | 35 | 50 | |
| | Bottle The Quantity | Φ16mm | Bottle | 900 | 2200 | 4256 | 9070 | 13608 |
| | | Φ22mm | Bottle | 460 | 1100 | 2268 | 4680 | 7020 |
| | The Dish Packs The Liquid | | | 4 | 10 | 15 | 35 | 50 |
| Basic Parameter | Shelf Size | Width | mm | 300 | 300 | 350 | 600 | 600 |
| | | Length | mm | 400 | 450 | 600 | 600 | 900 |
| | Shelf Distance | mm | 100 | | 90 | | | |
| | Shelf Number | Layer | 2+1 | 4+1 | 5+1 | 6+1 | 6+1 | |
| | Shelf Temperature Range | °C | -55~+80 | | | | | |
| | Shelf Difference In Temperature | °C | ±1.0 (Equilibrium Time) | | | | | |
| | Minimum Temperature Of Cold Trap | °C | ≤-75°C | | | | | |
| | Vacuum Leakage Degree | Pam ³ /sec | ≤5×10 ⁻³ | | | | | |
| | Minimum Vacuum Degree | Pa | ≤1 | | | | | |
| | The Foundation kit Supply | Cooling Type | Air-Cooled Well-Ventilated | °C | ≤25 | | | |
| Water-Cooled: ≤30°C, 0.15-0.2Mpa | | | m ³ /hr | 0.3 | 0.6 | 0.9 | 2 | 4 |
| Installed Power | | kw | 3.3(Single Phase) | 5(Three Phase) | 8(Three Phase) | 16(Three Phase) | 21(Three Phase) | |
| Toral Weight | | kg | 510 | 820 | 1200 | 2000 | 2300 | |
| Dimension | Length | mm | 700 | 900 | 1760 | 2200 | 2600 | |
| | Width | mm | 1300 | 1300 | 920 | 1400 | 1500 | |
| | Height | mm | 1700 | 1800 | 2200 | 2100 | 2400 | |
| Valid Area | | Unit | 0.2 | 0.5 | 1 | 2 | 3 | |

GE-DG Integral Type Vacuum Freeze Dryer

Innovative Technology

- Chamber is made of stainless steel which meet high standards of product processing requirements.
- Lamellar refrigeration ≤ -50°C Trap refrigeration ≤ -60°C.
- Screw compressor is to use environmentally refrigerant R404a which is international brand.
- Lamellar has a constant temperature in the cooling and sublimation process.
- Vacuum pump with high performance valve and roots pump have oilwater separating function.
- Cold trap of water replenishing highly, defrosting fastly.
- Electronic signature with American electronic record of FDA CFR PART 11.



| Parameters | Unit | Model | | | | | | | |
|-------------------|--|----------|---------|---------|---------|---------|---------|-------|------|
| | | GE-10DG | GE-15DG | GE-20DG | GE-35DG | GE-50DG | GE-75DG | | |
| Capacity | Shelf Usable Area | ² | 10 | 15 | 20 | 35 | 50 | 75 | |
| | Condenser Capacity | Kg/B | 200 | 300 | 400 | 700 | 1000 | 1500 | |
| Basic parameter | Diameter Cylinder | Diameter | mm | 1300 | 1300 | 2000 | 2000 | 2200 | 2200 |
| | | Length | mm | 2230 | 3010 | 2350 | 3300 | 3650 | 4950 |
| | Shelf Size | Width | mm | 600 | 600 | 1000 | 1000 | 1000 | 1000 |
| | | Length | mm | 1520 | 2300 | 1250 | 2200 | 2500 | 3750 |
| | Shelf Space | mm | 70 | | | | | | |
| | Shelf Number | No | 11+1 | 11+1 | 16+1 | 16+1 | 20+1 | 200+1 | |
| | Shelf Temperature Range | °C | -40+90 | | | -50+90 | | | |
| | Shelf Difference In Temperature | °C | ±3 | | | | | | |
| | Min Temperature Of Cold Trap | °C | -50 | | | -60 | | | |
| | Limit Vacuum Degree | Pa | 5 | | | 13 | | | |
| Foundation Supply | Cooling Wafer Qty: ≤30°C, 0.15-0.2Mpa | m³/hr | 12 | 17 | 21 | 25 | 36 | 52 | |
| | Compressed Air Consumption: 0.6-1.0Mpa | l/min | 0.45 | | | | | | |
| | Vacuum Defrost Water | m³/b | 0.035 | 0.053 | 0.071 | 0.125 | 0.178 | 0.267 | |
| | Water Consumption For Deicing ≈ 50°C, 0.1-0.2Mpa | m³/hr | 0.5 | 0.7 | 1 | 1.6 | 2.3 | 3.5 | |
| | Installed Power: 400V, 3P5W 50Hz(±5%) | kw | 40 | 50 | 70 | 120 | 140 | 160 | |
| Dimension | Length | mm | 2300 | 3100 | 2400 | 3300 | 3700 | 5000 | |
| | Width | mm | 2000 | 2000 | 2700 | 3000 | 3400 | 3400 | |
| | Height | mm | 2000 | 2000 | 2500 | 2500 | 2500 | 2500 | |
| Valid Area | Unit | 10 | 15 | 20 | 35 | 50 | 75 | | |

GE-SDG Split Type Vacuum Freeze Dryer



| Parameters | Unit | Model | | | | | | | |
|---------------------|---|----------|--------------------------|-----------|-----------|-----------|-----------|--------|-------|
| | | GE-50SDG | GE-75SDG | GE-100SDG | GE-125SDG | GE-150SDG | GE-200SDG | | |
| Capacity | Shelf Usable Area | 2 | 54.4 | 75.7 | 100.9 | 126.1 | 150.3 | 204.3 | |
| | Condenser Capacity | Kg/B | 1000 | 1500 | 2000 | 2500 | 3000 | 4000 | |
| Basic Parameter | Cylinder | Diameter | mm | 2200 | 2200 | 2200 | 2600 | 2600 | 2600 |
| | | Length | mm | 7570 | 9770 | 11620 | 13000 | 13580 | 16100 |
| | Shelf Size | Width | mm | 540 | 540 | 540 | 540 | 580 | 580 |
| | | Length | mm | 3290 | 4880 | 6680 | 5410 | 7120 | 9720 |
| | Tray Size | Width | mm | 774 | 774 | 774 | 774 | 850 | 774 |
| | | Length | mm | 510 | 510 | 510 | 510 | 550 | 550 |
| | The Plate Size | No | 64×2 | 64×3 | 64×4 | 80×4 | 80×4 | 80×6 | |
| | Shelf Size | mm | 76 | | | | | | |
| | Shelf Number | No | 17×2 | 17×2 | 17×2 | 21×2 | 21×2 | 21×2 | |
| | Shelf Temperature Range | °C | Normal Temperature-120°C | | | | | | |
| | Shelf Difference In Temperature | °C | ≤±3°C | | | | | | |
| | Min Temperature Of Cold Trap | °C | ≤60°C | | | | | | |
| Limir Vacuum Degree | Pa | 13.3Pa | | | | | | | |
| Foundation Supply | Cooling Water Qty:≤3°C, 0.15-0.2Mpa | m³/hr | 34+6 | 45+8 | 52+10 | 82+12 | 90+15 | 106+20 | |
| | Steam Consumption For De-icing:0.2-0.3Mpa | kg/hr | 200 | 280 | 400 | 480 | 590 | 780 | |
| | Compressed Air Consumption:0.6-1.0Mpa | l/min | 0.45 | | | | | | |
| | Vacuum Defrost Water | m³/b | 0.18 | 0.27 | 0.36 | 0.45 | 0.53 | 0.71 | |
| | Installed Power:400V, 3P5W 50Hz(±5%) | kw | 75+12 | 100+19 | 160+23 | 195+30 | 270+36 | 315+45 | |
| Dimension | Length | mm | 7600 | 9800 | 12000 | 13000 | 13600 | 16100 | |
| | Width | mm | 9100 | 7000 | 4700 | 5000 | 5000 | 226000 | |
| | Height | mm | 5000 | 5000 | 5000 | 5500 | 5500 | 5500 | |
| Valid Area | Unit | 50 | 75 | 100 | 120 | 150 | 200 | | |

GE-FDG Pharmaceutical Vacuum Freeze Dryer

Working Principle

Adopt the mobile pre-vacuum steam sterilization way with Fo value display and record. It has the complete safe connection and interlock function. Chamber has the cooling function. The steam valve in the steam entrance of the total tube is controlled by pneumatic, and the safety valve is installed above design pressure which can release automatically. The protection device from pressure and temperature is installed on chamber. When the temperature is above the settings, total import steam valve will be closed, and open exhaust valve. It ensures the system work security under the double protection device.



| Model | | | GE-1FDG | GE-2FDG | GE-3FDG | GE-5FDG | GE-7.5FDG | GE-10FDG | GE-13FDG | GE-15FDG | GE-20FDG | GE-25FDG | GE-30FDG | GE-40FDG | GE-50FDG | |
|---------------------------------|--------------------------------|---------------------|-------------------------|---------|---------|---------|-----------|----------|----------|----------|----------|----------|----------|----------|----------|--------|
| Valid Area | | m ² | 1 | 2 | 3 | 5 | 7.5 | 10 | 13 | 15 | 20 | 25 | 30 | 40 | 50 | |
| Capacity | Shelf Usable Area | m ² | 1.08 | 2.16 | 3.24 | 4.86 | 7.56 | 9.72 | 12.96 | 16.1 | 19.67 | 25.0 | 31.5 | 42 | 51.0 | |
| | Condenser Capacity | Kg/B | 20 | 40 | 60 | 100 | 150 | 200 | 260 | 320 | 400 | 500 | 600 | 800 | 1000 | |
| | Bottle The Quantity | Φ16 mm | bottle | 4100 | 8200 | 12300 | 18450 | 38950 | 38950 | 51250 | 65600 | 83160 | 102500 | 118900 | 164000 | 205000 |
| | | Φ22 mm | bottle | 2100 | 4200 | 6300 | 9450 | 19950 | 19950 | 26250 | 33600 | 42900 | 52500 | 60900 | 84000 | 105000 |
| Shelf Number | | l | 20 | 40 | 60 | 100 | 150 | 200 | 260 | 300 | 400 | 500 | 600 | 800 | 1000 | |
| Shelf Size | Φ16 mm | mm | 450 | 600 | 600 | 900 | 900 | 900 | 1200 | 1200 | 1200 | 1200 | 1490 | 1490 | 1490 | |
| | Φ22 mm | mm | 600 | 900 | 900 | 900 | 1200 | 900 | 1200 | 1200 | 1200 | 1200 | 1490 | 1490 | 1490 | |
| Shelf Distance | | mm | 100 | | | | | | | | | | | | | |
| Shelf Number | | layer | 4+1 | 4+1 | 6+1 | 6+1 | 7+1 | 9+1 | 9+1 | 9+1 | 11+1 | 14+1 | 14+1 | 14+1 | 17+1 | |
| Shelf Temperature Range | | °C | -50~+80 | | | | | | | | | | | | | |
| Shelf Difference In Temperature | | °C | ±1.0 (Equilibrium Time) | | | | | | | | | | | | | |
| Basic Parameter | Temperature Of Cold Trap | °C | ≤-75°C | | | | | | | | | | | | | |
| | Minimum Vacuum Degree | Pa | ≤1 | | | | | | | | | | | | | |
| | Cooling Water Qty | m ³ /hr | 3.2 | 4.2 | 4.5 | 11 | 16 | 18 | 20 | 20 | 20 | 30 | 38 | 50 | 50 | |
| | Cleaning Water Consumption | l/min | 100 | 100 | 100 | 100 | 100 | 100 | 100 | 100 | 100 | 500 | 200 | 200 | 200 | |
| | Pure Steam Consumption | kg/hr | 20 | 40 | 60 | 100 | 150 | 200 | 260 | 300 | 400 | 1200 | 550 | 600 | 650 | |
| | Steam Consumption For De-icing | kg/hr | 5 | 10 | 15 | 25 | 40 | 50 | 65 | 75 | 100 | 1200 | 150 | 200 | 250 | |
| | Compressed Air Consumption | m ³ /min | 0.1 | | | | | | | | | | | | | |
| | Water Consumption For Deicing | kg/B | | | | | | | | | | | | | | |
| | Installed Power | kw | 9 | 12 | 21 | 24 | 44 | 58 | 67 | 75 | 104 | 125 | 134 | 174 | 210 | |
| | Total weight | t | 1.9 | 2.3 | 2.8 | 4.2 | 6 | 8.6 | 9 | 12 | 18 | 20 | 25 | 28 | 35 | |
| Dimension | Length | mm | 3230 | 3640 | 4600 | 4930 | 5460 | 5440 | 5680 | 6000 | 6950 | 7160 | 7700 | 8220 | 8490 | |
| | Width | mm | 1500 | 1620 | 2020 | 2020 | 2016 | 2316 | 2316 | 2316 | 2316 | 2316 | 2716 | 2716 | 2716 | |
| | Height | mm | 2550 | 2550 | 2800 | 3100 | 3200 | 3420 | 3450 | 3450 | 4100 | 4250 | 4310 | 4350 | 4960 | |
| Valid Area | | Unit | 1 | 2 | 3 | 5 | 7.5 | 10 | 13 | 15 | 20 | 25 | 30 | 40 | 50 | |

The height of equipment with the protective sleeve of the corrugated pipe will increase 200mm-30

GE-DY Single Punch Tablet Press

Working Principle

The machine has good performance, easy to operate and easy to move. This machine can press all kinds of granular, crystalline or powdery raw materials with good fluidity into disc, cylindrical, spherical, convex, concave and other products of various geometric shapes (such as square, triangle, ellipse, capsule shape) etc.), and can also press products with words, trademarks, patterns. Suitable for small batch production and teaching use in scientific research experiments. The filling depth and pressing thickness of the material can be adjusted (adjusted according to the weight, thickness and hardness of the product).



Technical Data:

| Model | GE-1.5DY | GE-3DY | GE-4DY | GE-5DY | GE-6DY |
|-----------------------------|-------------|-------------|-------------|-------------|-------------|
| Max.Pressure(Kn) | 15 | 30 | 40 | 50 | 60 |
| Max.Dia.of Tablet(mm) | 12 | 15 | 30 | 16 | 20 |
| Max.Depth of Fill(Kn) | 12 | 18 | 22 | 15 | 18 |
| Max.Thickness of Tablet(mm) | 6 | 6 | 6 | 6 | 7 |
| Production Capacity(pcs/h) | 12 | 4000 | 3600 | 5000 | 4000 |
| Power of Motor (Kw) | / | 0.75 | 0.75 | 0.75 | 1.5 |
| Overall Size(mm) | 330x220x520 | 450x300x550 | 850x550x890 | 650x330x600 | 500x410x680 |
| Net Weight(kg) | 21 | 50 | 200 | 125 | 85 |

GE-Y Series Automatic Tablet Pressing Machine

Working Principle

This machine can continuously and automatically press granular raw materials into tablets. It is mainly used in pharmaceutical industry and the chemical ,food, plastics powder, metallurgy and electronic industries.

Innovative Technology

- The outside part of the machine is fully-enclosed, and it is made of stainless steel, meeting the G.M.P requirement.
- It has transparent windows so that press condition can be observed clearly and the window can be opened. Cleaning and maintenance is easy.
- The machine can press not only round tablets but also different shape tablets, double-layered and annular tablets, the tablets may have impressed letters on both sides.
- All the controller and devices are included in the system to avoid the damage of the punches and apparatus,when overload occurs.
- The machine's worm gear drive adopts fully-enclosed oil-immersed lubrication with long service-life, prevent cross pollution.



| Model | GE-130 | | | | | GE-168 | | | | GE-198 | | | GE-226 | | | | | | | |
|--|--------------|-------|-------|-------|-------|-------------------|-------|-------|-------|--------------|-------|-------|--------------|-------|-------|-------|-------|-------|--------------|----|
| Product No. | 5Y | 7Y | 9Y | 10Y | 12Y | 10Y | 12Y | 15Y | 16Y | 8Y | 10Y | 16Y | 11Y | 15Y | 17Y | 19Y | 21Y | 30Y | | |
| Quantity Of Punch &Die(Sat) | 5 | 7 | 9 | 10 | 12 | 10 | 12 | 15 | 16 | 8 | 10 | 16 | 11 | 15 | 17 | 19 | 21 | 30 | | |
| Max.Pressure(kn) | 40 | | | | | 50 | | | | 60 | | | 100 | 80 | 60 | | | | | |
| Max.Dia.Of Tablet(mm) | 13 | | | | | 22 | 12 | | | 25 | | | 18 | 12 | 11 | 40 | 25 | 20 | 12 | 10 |
| Max.Thickness Of Tablet(mm) Max.Depth Of Filling(mm) | 6 | | | | | 6 | | | | 8 | | | 6-12 | | | | | | 6 | |
| Rotate Speed (r/min) | 15 | | | | | 15 | | | | 16 | | | 15-28 | | | | | | 15 | |
| Production Capcity(pc/h) | 32 | | | | | 38 | | | | 40 | | | 20 | 30 | | | | | | |
| Voltage(v/hz) | 9600 | 13440 | 17280 | 19200 | 23040 | 24000 | 28800 | 36000 | 38400 | 9600 | 12000 | 19200 | 13200 | 27000 | 30600 | 34200 | 19000 | 72000 | | |
| | 220/380 | | | | | AC220/50-AC380/50 | | | | 380 | | | 380 | | | | | | | |
| Motor Power(kw) | 1.5 | | | | | 2.2 | | | | 2.2 | | | 5.5 | 4 | 3 | | | | | |
| Overall Size(mm) | 640X480X1110 | | | | | 640X480X1200 | | | | 710X700X1680 | | | 794X699X1132 | | | | | | 794X699X1132 | |
| Weight(kg) | 260 | | | | | 380 | | | | 860 | | | 550 | | | | | | 550 | |

PRODUCT PARAMETERS

Automatic Tablet Pressing Machine

| Model | GE-420 | | | | | | | | | | | | | | | GE-680 | | | | | |
|-----------------------------|---------------|-------|-------|-------|-------|-------|-------|-------|--------|--------|--------|--------|--------|--------|--------|-------------|--------|--------|-------|-------|-------|
| Product No. | 15Y | 17Y | 19Y | 21Y | 23Y | 25Y | 27Y | 29Y | 31Y | 35Y | 37Y | 39Y | 41Y | 45Y | 55Y | 73Y | 65Y | 51Y | 35Y | 27Y | 45Y |
| Quantity Of Punch &Die(Sat) | 15 | 17 | 19 | 21 | 23 | 25 | 27 | 29 | 31 | 35 | 37 | 39 | 41 | 45 | 55 | 73 | 65 | 51 | 35 | 27 | 45 |
| Max.Pressure(kn) | 120 | | | | | 100 | | | | 80 | | | | | | 80 | 80 | 100 | 120 | | 80 |
| Max.Dia.of Tablet(mm) | 50 | 40 | 33 | 25 | 22 | 20 | | | 13 | | | 10 | 8 | 10 | 11 | 12 | 20 | 40-36 | 45 | 20 | |
| Max.Thickness Of Tablet(mm) | 15 | 12 | 8 | 2-15 | | | 6 | | | | | | 6 | 8-14 | | | 18 | | | | |
| Max.Depth Of Filling(mm) | 32 | 28 | 22 | 16-28 | | | 6 | | | | | | 15 | 18-33 | | | 18 | | | | |
| Rotate Speed (r/min) | 3-10 | 3-24 | | | 3-35 | | | | | | 35 | 30 | 25 | 20 | 18 | 25 | | | | | |
| Production Capcity(pc/h) | 9000 | 24480 | 27380 | 30240 | 55200 | 60000 | 81000 | 87500 | 111600 | 147500 | 155400 | 163800 | 172200 | 189000 | 231000 | 262800 | 234000 | 153000 | 84000 | 58320 | 13500 |
| Voltage(v/hz) | 380/50 | | | | | | | | | | | | | | | 380/35 | | | | | |
| Motor Power(kw) | 4 | 5.5 | | | 4 | | | | | | 7.5 | | | 11 | 15 | 7.5 | | | | | |
| Overall Size(mm) | 1240X980X1650 | | | | | | | | | | | | | | | 115X115X190 | | | | | |
| Weight(kg) | 1850 | | | | | | | | | | | | | | | 3500 | 3800 | 4000 | 3800 | | |

GE-HY Flower Basket Type Tablet Pressing Machine

Working Principle

The machine is a flower basket type continuous automatic tablet press. It is one of the fundamental equipment for pressing granular raw materials into tablets in such industries as medicine, chemical industry, food and electronics. It is suitable for making medicine tablets, coffee tablets, powder metallurgy, electronic parts and all kinds of fertilizer and pesticide tablets in small batch production, laboratories, hospitals and other sectors. It can be used to make various special-shaped and ring-shaped tablets, as well as tablets with trademarks, words and simple images carved on both sides. Thanks to its high pressure and high strength, it is especially suitable for making powder tablets difficult to form, such as ceramic powder, metal powder, etc.



| Model | GE-15HY-D | GE-30HY-D | GE-30HY-B | GE-60HY-B |
|---------------------------------|--------------|---------------|---------------|---------------|
| Working Pressure(T) | 15 | 30 | 30T | 60T |
| Upper Punch Max. Travel(mm) | 100 | 110 | 110mm | 110mm |
| Loading Height(mm) | 60 | 60 | 6-30mm | 60mm |
| Lower Mold diameter(mm) | 115 | 50 | 6-80mm | 100mm |
| Production Capacity (times/min) | 20-25 | 20 | 20 | 20 |
| Product Error | ±0.05 | ±0.05 | ±0.1 | ±0.05 |
| Motor Power(W) | 4000 | 4000 | 4kw | 5.5kw |
| Overall Size(mm) | 900x800x2100 | 1000x900x2500 | 900x1000x2200 | 900x1000x2600 |
| Weight(kg) | 800 | 2.3T | 1.8T | 2.4T |

GE-GY High Speed Tablet Pressing Machine

Working Principle

Meets GMP requirement can press tablets with different colors, annular tablets, round tablets, engraved tablets and irregular tablets. Available for pharmaceutical factory, food and chemical industries. Tablets formed twice by main pressing and pre-pressing. Frequency conversion adjustment of the main motor and feeding motor, continuous adjustable speed, and upper and lower limit control function of film weight, starting with load reduction. With the main pressure average value display, automatic fault display function, and automatic shutdown, alarm and help menu.

Innovative Technology

- Central auto lubrication system.
- Touch screen + PLC control.
- Auto compensation of powder.
- Monitoring pressure of each punches and displays the pressure on the touch screen.
- There are two chutes for qualified tablets and defective tablets.
- Defective tablets can be rejected from one chute.



PRODUCT PARAMETERS

| Model | GE-265 | | | GE-370 | | | |
|--------------------------------|-----------------|--------------|--------------|-----------------|--------------|--------------|--------------|
| Product No. | 16GY | 23GY | 30GY | 26GY | 32GY | 40GY | 50GY |
| No.of Stations | 16 | 23 | 30 | 26 | 32 | 40 | 50 |
| Tooling Type | D | B | BB | D | B | BB | TF16 |
| Output Range (tablet s/h) | 21000-105000 | 30000-151000 | 39000-198000 | 20000-171600 | 25000-211200 | 31000-264000 | 38000-325000 |
| Rotation Speed Range(rpm) | 22-110rpm | | | 13-110rpm | | | |
| Main Pressure | 100KN 14KN | | | 100KN | | | |
| Pre-Pressure | | | | 16KN | | | |
| Max Tablet Diameter | Φ25mm | Φ16mm | Φ13mm | 20mm | 16mm | | |
| Max length Of Irregular Tablet | 25mm | 19mm | 16mm | 1-8mm | | | |
| Diameter Of Die | Φ38.1mm | Φ30.16mm | Φ24mm | Φ25mm | Φ16mm | Φ13mm | Φ10mm |
| Max Filling Depth | 20mm | | | <25mm | <19mm | <16mm | <11mm |
| Diameter Of Punch | Φ25.35mm | Φ19mm | | Φ38.1mm | Φ30.16mm | Φ24mm | Φ19mm |
| Length Of Punch | 133.6mm | | | Φ25.35mm | Φ19mm | | Φ16mm |
| Pitch Circle Diameter | 265mm | | | 133.6mm | | | |
| Main Motor Power | 5.5KW | | | 7.5KW | | | |
| Weight | 1200kg | | | 1600kg | | | |
| Dimension | 700X1000X1750mm | | | 820x1100x1750mm | | | |

| Model | GE-561 | | | | GE-620 | | | GE-720 | | | | |
|--------------------------------|--|--------------|-----------------------------------|--------------|----------------|------|------|---|--------------|--------------|--------------|--------------|
| Product No. | 41GY | 51GY | 61GY | 77GY | 45GY | 55GY | 65GY | 51GY | 65GY | 73GY | 83GY | 99GY |
| No.of Stations | 41 | 51 | 61 | 77 | 45 | 55 | 65 | 51 | 65 | 73 | 83 | 99 |
| Tooling Type | D | B | BB | TF-16 | | | | D | B | BB | BBS | TF-16 |
| Output Range (tablet s/h) | 22140-221400 | 27540-275400 | 32940-329400 | 42660-426600 | 40 | 49 | 58 | 47000-470000 | 62400-624000 | 70000-700000 | 79600-796000 | 95000-950000 |
| Rotation Speed Range(rpm) | 9-90 | | | | 8-80rpm | | | | | | | |
| Main Pressure | 100KN | | | 25KN | 100KN | | | 100KN | | | | |
| Pre-Pressure | 100KN | | | 25KN | 16KN | | | 100KN | | | | |
| Max Tablet Diameter | 25mm | 16mm | 13mm | 10mm | 25mm | 16mm | 13mm | Φ25mm | Φ16mm | Φ13mm | 10mm | |
| Max length Of Irregular Tablet | 25mm | 19mm | 16mm | 11mm | 1-8mm | | | 25mm | 19mm | 16mm | 11mm | |
| Max Filling Depth | first layer:19mm second layer:6-8 | | first layer:15mm second layer:6-8 | | 20mm | 16mm | | 20mm | 18mm | | | |
| Main Motor Power | 11KW | | | | 11KW | | | 11KW | | | | |
| Weight | 4000kg | | | | 3300kg | | | 5500kg | | | | |
| Dimension | 1180x1180x20235mm Cabinet:890x510x1200mm | | | | 1400x1500x1900 | | | 1300x1300x2000mm Cabinet:890x500x1200mm | | | | |

GE-GB Series High Efficiency Tablet Coating Machine

Working Principle

The GE-GB coating machine is mainly used in medicine and food industries, suitable for tablet, pills and candies coating, such as organic film coating, water soluble coating, sugar coating, chocolate coating, etc.

Innovative Technology

- It adopts PLC and HMI control, can make flexible programming and meet various pharmaceutical process requirements.
- Under the action of the streamlined diversion plate mixer, the tablets or pills turn smoothly and exchange frequently, avoiding the tablets or pills dropping from high positions and eliminating the colliding, highly enhanced the rate of finished products.
- It adopts the new type spray gun, which is with even atomizing, large spraying area, adjustable direction. The nozzle won't be affected by the loading volume.
- The technical parameters with quantitative display and control, the SOP operation can be formulated, ensure the quality consistency of each batch, fully meeting GMP requirements.

Technical Data:

| Item Model | | GE-5GB | GE-10GB | GE-40GB | GE-80GB | GE-150GB | GE-250GB | GE-400GB | GE-600GB |
|---|----------------------------|--------------|--------------|---------------|----------------|----------------|----------------|----------------|----------------|
| Maximum Capacity | | 5 | 10 | 40 | 80 | 150 | 250 | 400 | 600 |
| Roller Speed Adjustment Range | | 2-25 | | 2-20 | 2-20 | 2-18 | 2-15 | | 2-12 |
| Main Machine Outline Dimensions(LXWxH) | | 900x800x1700 | 900x840x1800 | 1080x900x2000 | 1210x1000x2100 | 1600x1260x2300 | 2000x1550x2550 | 2050x1680x2650 | 2400x2020x2650 |
| Coating Roller Diameter | | Φ400 | Φ580 | Φ820 | Φ940 | Φ1200 | Φ1500 | Φ1580 | |
| Main Machine Motor Power | | 0.55 | | 1.1 | 1.5 | 2.2 | 3 | 4 | 5.5 |
| Hot Air Cabinet Motor Power | | 0.37 | | 0.75 | 1.1 | 1.5 | 3 | | 5.5 |
| Exhaust Cabinet Motor Power | | 0.75 | | 2.2 | 3.0 | 5.5 | 7.5 | | 11 |
| Exhaust Cabinet Air Supply Volume | | 800 | 900 | 2500 | 2700 | 3600 | 4200 | 5000 | 6500 |
| Hot Air Temperature Control Range | | <80 | | <80 | | | | | |
| Power Supply | Three-Phase Five-Wire | 6kw,380v | 7kw,380v | 12kw,380v | 15kw,380v | 18kw,380v | 25kw,380v | 32kw,380v | 45kw,380v |
| Air Supply | Clean Compressed Air | >0.40 | | | | | | | |
| | Compressed Air Consumption | 0.2 | | 0.3 | 0.4 | 0.6 | 0.8 | 1.2 | |
| Steam | Steam Pressure | | | >0.6 | >0.6 | | | | >1 |
| | Steam Consumption | | | 40 | 60 | 80 | 110 | 130 | 220 |
| | Steam Pipe Diameter | | | G1" | G1" | | G1.2" | | G2" |
| Heat Insulation Barrel Electric Heating Power | | | | 1KW | 2KW | | 4KW | | 6KW |



ACCESSORY EQUIPMENT

■ For Tablet Coater



FILTERING HOT AIR CABINET

The air is sucked in by the centrifugal fan. 100,000-grade purification is achieved after primary, medium and high filtration. Then through the heat exchanger (steam or electric heating), the air is blown into the main. It is also provided with vibration absorber. The initial air filtering unit is additionally mounted at the air intake.



DUST REMOVAL EXHAUST CABINET

It is used for exhaust of main machine roller (with dust removal) and can maintain negative pressure, dust removal and filtration at the work area. It is equipped with vibration absorber. The exhaust outlet is provided with backflow preventer. Close the exhaust outlet before stopping the machine to avoid backflow of exhaust gas in the exhaust pipe, and it is provided with the automatically timed vibration and dust removal function.



MIXING HEAT INSULATION BARREL (ELECTRIC HEATING)

The constant temperature mixing barrel adopts electric heating. It is provided with air mixer. With stable rotation speed and stepless speed control, it adopts compressed air as the power. The media are mixed evenly. Automatic control is available within the range of room temperature ~ 80°C. With convenient operation and good safety and reliability, it is fully made of stainless steel. The interior and exterior surfaces are subject to mirror polishing.

GE-JB Simple Tablet Coating Machine

Working Principle

Tablet Coating Machine applied a thin layer of material to the external surface of a tablet. The tablets are placed in a rotating pan and then sprayed for even coating. And air is introduced to the pan to help the coating dry rapidly. The material contact part is made of 304 stainless steel, which complies with GMP requirements.



Technical Data:

| Coating pan Model | diameter (mm) | Capacity (kg/batch) | Main motor power (w) | Blower motor power (w) | Spray gun | Dimension (mm) | Heating total power (kw) | Weight (kg) | Speed regulating range of main engine (r/min) |
|-------------------|---------------|---------------------|----------------------|------------------------|---|----------------|--------------------------|-------------|---|
| GE-200JB | 200 | 0.5 | 0.37 | 60 | RA-CI According to customer requirements | 790×570×960 | 1.5 | 70 | 0-60 |
| GE-300JB | 300 | 1.3 | 0.37 | 60 | | 790×570×960 | 1.5 | 70 | 0-60 |
| GE-400JB | 400 | 2-5 | 0.37 | 60 | | 790×570×960 | 1.5 | 70 | 0-46 |
| GE-600JB | 600 | 8~15 | 0.75 | 100 | | 1040×680×1300 | 2 | 160 | 0-40 |
| GE-800JB | 800 | 30~50 | 1.1 | 200 | | 1000×1000×1550 | 4 | 300 | 0-32 |
| GE-1000JB | 1000 | 50-70 | 1.5 | 200 | | 1200×1200×1600 | 4 | 350 | 0-32 |
| GE-1250JB | 1250 | 80-150 | 2.2 | 370 | | 1350×1350×1600 | 6 | 500 | 0-28 |
| GE-1500JB | 1500 | 100-350 | 5.5 | 370 | | 1500×1760×2220 | 6 | 900 | 0-20 |

GE-SP Tablet Deduster

Working principle

This machine is an automatic continuous working screen machine, which can be used with various types of the pressed tablets.
The function is to screen the powder or excess particles absorbed on the surface of the tablet after forming.



Technical Data:

| Name | Tablet Deduster | Uphill Deduster | Rotary Deduster |
|---------------------|--------------------------|---------------------------|--------------------------|
| Type | GE-SP-1 | GE-SP-2 | GE-SP-3 |
| Output | 600000tablets / h (φ6mm) | 1000000tablets / h (φ6mm) | 600000tablets / h (φ6mm) |
| Removal Distance(m) | 3 | 6.2 | 3 |
| Applicable | φ3-φ25 | φ3-φ25 | φ3-φ25 |
| Compressed Air | 0.1m3/min 0.05Mpa | 0.1m3/min 0.05Mpa | 0.1m3/min 0.05Mpa |
| Vacuum | 2.7m3/min 0.1Mpa | 2.7m3/min 0.1Mpa | 2.7m3/min 0.1Mpa |
| Power Supply | 220V/50HZ/0.1KW | 220V/50HZ/0.15KW | 220V/50HZ/0.1KW |
| Net Dimensions(mm) | 800*450*600 | 500*500*1400 | 800*450*800 |
| Weight(kg) | 45 | 80 | 40 |

GE-BJ Semi-Automatic Capsule Filling Machine

Innovative Technology

The product is special capsule filling machine which is suitable for medium and small pharmaceutical factory, hospital preparation lab, etc. The machine adopts programmable control system, stepless transduction speed-shift, and electronic automatic counter. And it automatically completes the action of sowing, separation, filling, locking, etc.
The dosage is accurate, and the operation is convenient.
The overall machine is made of stainless steel, and it is suitable for the capsule which is filled with powder and granules.



Technical Data:

| Model | GE-BJ-III | GE-BJ-IV |
|--------------------|-----------------------------|------------------------|
| Capacity | 12500-25000pcs/h | 30000-60000PCS/H |
| Capsule Size | 00#-5# & Safety Capsule A-E | |
| Filling Agent Type | Powder, particle, pellet | |
| Power Supply | 380V/220V 1P/3P 2.1KW | |
| Vacuum Pump | 40m³/h | 80m³/h |
| Dimension | 1140*700*1630mm(L*W*H) | 1300*700*1650mm(L*W*H) |
| Weight | 350KG | 400kg |

GE-J Series Automatic Capsule Filling Machine

Working Principle

GE-J series automatic capsule filling machine is the third generation of innovative products, covering all the functions and effects of domestic capsule filling machine of the same model.

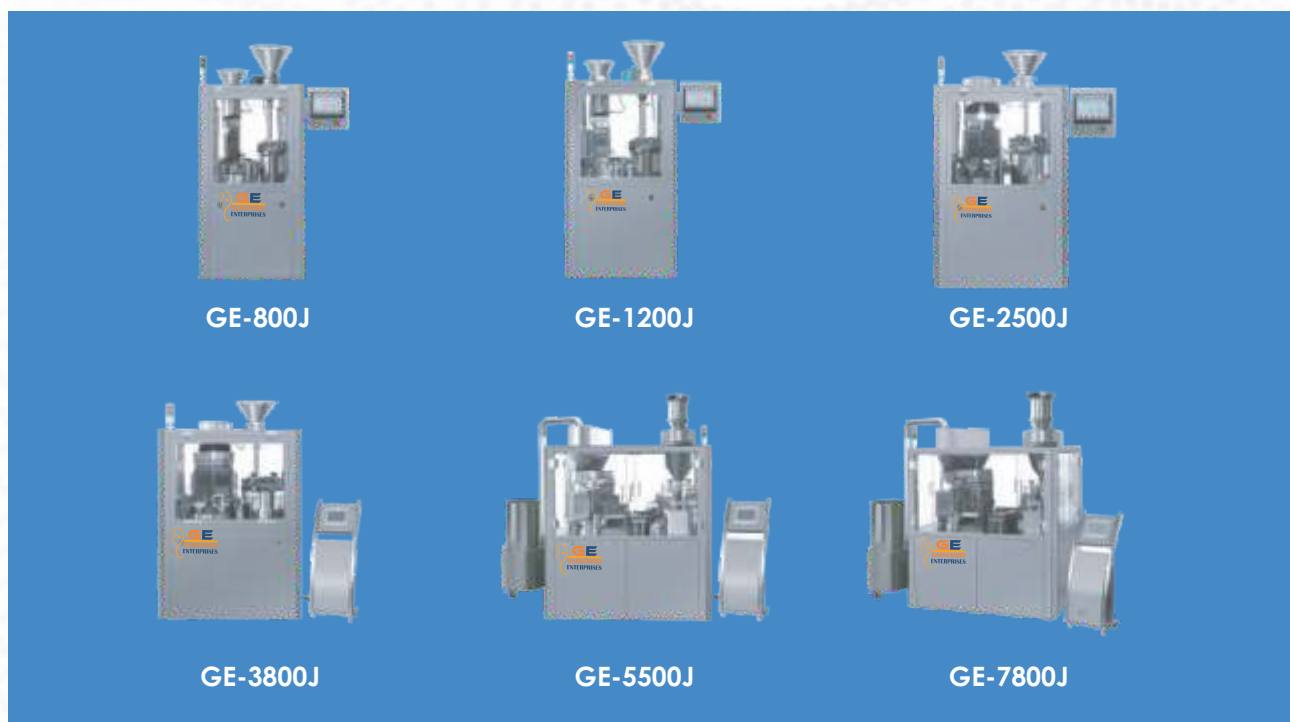
Innovative Technology

- Structure of the machine base has been improved.
- Turntable structure has been innovated.
- Filling structure has been innovated.
- Finished capsule outlet structure has been innovated.
- Device to separate the powder and defective capsule has been innovated, three of which has been issued the utility model patent certificate by the national intellectual property administration, PRC.



GE-200/400J

AUTOMATIC CAPSULE FILLING MACHINE



Enclosed Turntable



Capsule Sewing Station



Powder Filling Station



Capsule Locking Station

Technical Data:

| Model | GE-200J | GE-400J | GE-800J | GE-1200J | GE-2500J | GE-3800J | GE-5500J | GE-7800J |
|----------------------------------|---|---------|---------------------|-------------------|---------------------|--------------------------------------|----------------|----------------|
| Output (pcs/hour) | 12000 | 24000 | 48000 | 72000 | 150000 | 228000 | 330000 | 468000 |
| No. of Segment bores(pcs) | 2 | 3 | 6 | 9 | 18 | 27 | 43 | 58 |
| Applicable Capsule Size | 00,0,1,2,3,4,5#, safety capsules A-E | | | | | 00,0,1,2,3,4,5#, safety capsules A-E | | |
| Total Power(kw) | 3 | 3 | 5 | 5.5 | 8 | 10.5 | 11 | 14 |
| Vacuum | 20m³/h 0.04-0.08Mpa | | 40m³/h 0.04-0.08Mpa | | 63m³/h 0.04-0.08Mpa | 0.04-0.08 Mpa | 0.02-0.06 Mpa | 0.4-0.6Mpa |
| Dust Collector | 17.6Kpa 180 m³/h | | | 24.5 Kpa 210 m³/h | | | | |
| Compressed Air (m³/h 0.3-0.4Mpa) | 3 | 3 | 3 | 4 | 6 | 8 | 12 | |
| Filling Accuracy | Western Medicine ±3% Chinese Medicine ±4% | | | | | | | |
| Suitable Material | Powder, Granules, Pellet, Tablet | | | | | | | |
| Working Noise | <75DB(A) | | | | | | | |
| Weight(kgs) | 600 | 600 | 900 | 1100 | 1500 | 2200 | 3000 | 3500 |
| Overall Dimension(mm) | 1000×7100×1900 | | 1100*900*2050 | 1100*910*2100 | 1100*1200*2000 | 1500*1200*2200 | 1500*1250*2200 | 1450*1920*2400 |

GE-JPG Series Capsule Polishing Machine

Working Principle

GE-JPG series capsule polisher is an advanced capsule polishing machine with filtrating function. The whole machine is made from stainless steel; fast connection of roller brush leads to disassemble easily and clean thoroughly; frequency inverter controls the speed of the motor. This machine is suitable for all sizes of capsules.



Technical Data:

| Model | GE-JPG-1 | GE-JPG-2 | GE-JPG-3 |
|---------------------|-----------------|---------------|----------------|
| Power Supply | 220V 50HZ | 220V 50HZ | 220V 50HZ |
| Power | 280W | 0.65KW | 0.65KW |
| Air Pressure | | ≥0.3Mpa | ≥0.3Mpa |
| Air Consumption | | 2.7L/min | |
| Production Capacity | 7000 Pcs/min | 200000 Pcs/h | 300000 Pcs/h |
| Weight | 45kg | 70kg | 75Kg |
| Dimensions | 1150×400×1000mm | 800×550×800mm | 740×510×1500mm |

GE-YZJ Tablet Soft Capsule Printer

Innovative Technology

- All stainless steel sealed design, fully compliant with the "GMP" specification.
- Automatic vibratory feeder is used to improve filling rate and yield rate.
- Fully enclosed printing function.
- With brake wheels, easy to move.



Technical Data:

| Model | | GE-400YZJ | GE-400YZJ1 | GE-800YZJ | GE-1000YZJ |
|----------------|--------------|------------------|------------------|-------------------|-----------------|
| Suitable size | Tablet | Φ10~Φ12mm | Φ5~Φ12mm | Φ10~Φ12mm | Φ10~Φ12mm |
| | Hard Capsule | 0#-4# | 00#-5# | 0#-4# | 0#-4# |
| | Soft Capsule | 5--20mm | 3.3-35mm | 5--20mm | 5--20mm |
| Capacity | | 30000-85000pcs/h | 35400-60000pcs/h | 45000-100000pcs/h | 100,000pcs/h |
| Compressed Air | | 40Pa | 40Pa | 40Pa | 40Pa |
| Motor Power | | 0.25KW | 0.25KW | 0.37KW | 0.75KW |
| Power Supply | | 220V 50HZ | 220V 50HZ | 220V 50HZ | 220V 50HZ |
| Dimensions | | 1000x760x1540mm | 610x910x640mm | 1000×800×1960mm | 2000x415x1400mm |
| Weight | | 230KG | 230KG | 230KG | 230KG |

GE-ZP Series Bottle Turn Table

Working Principle

Manually place the bottles with the bottle mouth upward on the rotary table, and then the bottle will automatically enter the conveyor belt through the rotary table.



Technical Data:

| Model | GE-650ZP | GE-900ZP | GE-1200ZP |
|-----------------|---|-------------------|-------------------|
| Suitable Bottle | Plastic and glass bottles of various shapes | | |
| Capacity | 20-100bottles/min | 30-120bottles/min | 20-150bottles/min |
| TableDiameter | 650mm | 900mm | 1200mm |
| Powersupply | 220V/50HZ 0.15KW | 220V/50HZ 0.2KW | 220V/50HZ 0.25KW |
| Dimension | 650x650x1040mm | 900x900x1040mm | 1200x1200x1040mm |
| Weight | 80KG | 120KG | 150KG |

GE-LP Series Bottle Unscrambler

Working Principle

The motor drives the rotating disc by gear.

The bottles in the hopper move to the upper of the feeding disc by the semicircle groove of the rotating disc. The bottle in the semicircle groove automatically reversed through the bottle flap board, achieve the bottle with mouth upward.

And the bottles will be transferred to the counting machine wait for counting by conveyor belt.



Technical Data:

| Model | GE-80LP | GE-120LP | GE-150LP |
|------------------------|-----------------------|-----------------------------------|-------------------|
| Suitable Bottle | Round plastic bottles | Various shapes of plastic bottles | |
| Capacity | 30-100bottles/min | 60-200bottles/min | 10-150bottles/min |
| Suitable Bottle Volume | 50-300ml | 15-500ml | 15-500ml |
| PowerSupply | 220V/50HZ 0.25KW | 220V/50HZ 1KW | 220V/50HZ 0.6KW |
| Dimension | 1350X1000X1270mm | 2200x1350x1900mm | 2400x1050x1450mm |
| Weight | 230KG | 650KG | 630KG |

GE-QX Series Bottle Air Cleaning Machine

Innovative Technology

- With high efficiency and stable washing effect. The machine won't make washing if there is no bottle coming.
- The bottle flushing speed can be controlled freely, and the current production speed can be displayed digitally.
- The turnover manipulator has the advantages of accurate bottle grasping positioning and free turnover.

The blowing valve has the advantages of good sealing performance and long service life.

- The manipulator is made of stainless steel, the bottle turning and bottle placing are stable and free.



Technical Data:

| Model | GE-10QX | GE-20QX | GE-30QX | GE-40QX |
|-----------------|-----------------------|------------------|--------------------|----------------------------|
| Application | Plastic round bottles | | | |
| Capacity | 30-40bottles/min | 60-80bottles/min | 100-120bottles/min | 130-150bottles/min |
| Power supply | 220V 50HZ 1.5KW | 220V 50HZ 1.5KW | 380V 50HZ 1.1KW | 220V/380V 50HZ 3.0KW |
| Air consumption | 0.6Mpa 3L/min | 0.6Mpa 3L/min | 0.6Mpa 3L/min | 0.6Mpa 15m ³ /h |
| Dimension | 2000×1000×1600mm | 2000×1000×1600mm | 2400×1200×1800mm | 2400×1200×1800mm |
| Weight | 450KG | 550KG | 600KG | 700KG |

GE-BS Series Semi-Automatic Capsule Counting Machine

Working Principle

It can be widely used in the fast counting bottling for a variety of different shapes and sizes of tablets, capsules, pills, transparent soft capsules and other drugs. After the hopper is filled with the product to be counted, bottle or other container is placed at the bottling position manually. Then the product falls into the counting device in an orderly manner through the vibratory plates, and is counted by the photoelectric counting sensor and then loaded into the bottle or other container. Filled bottles are taken away manually, and new empty bottles are put on for filling.



GE-2BS



GE-4BS



GE-6BS

Technical Data:

| Model | GE-2BS | GE-4BS | GE-6BS |
|--------------------|--|---------------------|-------------------|
| Application | Hard capsules, soft capsules, tablets, pills, etc. | | |
| Capacity | 800-2000pcs/min | 2000-3500pcs/min | 10-30 bottles/min |
| Discharge Head No. | 2 | 4 | 1 |
| Power Supply | 220V 50/60HZ 0.1KW | 220V 50/60HZ 0.15KW | 220V 50HZ 0.6KW |
| Dimension | 735×580×720mm | 920×740×880mm | 1090×280×840mm |
| Weight | 50KG | 78KG | 100KG |

GE-S Series Electronic Capsule Counting Machine

Innovative Technology

- The bottles will be stopped by the stopper on the feeding tracks of the unscrambler and wait for filling.
- The pills enter orderly to the medicine bin by the vibration of the feeding corrugated plate.
- There are counting sensors installed in the medicine bin, the pills in the medicine bin will be filled into the bottles after they counting by the sensors.



ELECTRONIC CAPSULE COUNTING MACHINE



Technical Data:

| Model | GE-8S | GE-12S | GE-16S | GE-24S | GE-32S | GE-48S |
|----------------|---|----------------------|----------------------|----------------------|----------------------|----------------------|
| Application | 000-5# Capsules, soft capsules φ≤22mm tablets, irregular tablets 3.5-22mm pellets, candies, etc | | | | | |
| Capacity | 10-40 bottles/min | 10-50 bottles/min | 10-70 bottles/min | 10-80 bottles/min | 10-100 bottles/min | 10-120 bottles/min |
| Counting Range | 2-9999 pcs per bottle, adjustable | | | | | |
| Power supply | 220V/50HZ 0.6KW | 220V/50HZ 0.75KW | 220V/50HZ 0.9KW | 220V/50HZ 1KW | 220V/50HZ 1.3KW | 220V/50HZ 1.6KW |
| Dimension | 1360x1530x 1700mm | 1360x1530x 1700mm | 1560x1530x 1700mm | 1560x1530x 1700mm | 2160x1530x 1700mm | 2160x1530x 1700mm |
| Weight | 320KG | 340KG | 480KG | 560KG | 710KG | 900KG |

GE-GS/MS Series Desiccant/Cotton Inserting Machine

Innovative Technology

- The bottle retaining cylinder on the bottle conveying track of the bottle conveying mechanism will block the bottle delivered from the previous equipment at the position of loading desiccant/cotton, waiting for loading desiccant/cotton, and the bottle mouth will align with the cutting mechanism.
- The step motor drives the bag/cotton delivering mechanism to pull out the desiccant bag/cotton from the desiccant bag tray frame/cotton roll, the conveyor belt of the bottle conveying mechanism delivers the loaded desiccant/cotton bottle to the next equipment.



Technical Data:

| Model | GE-GS | GE-GSP | GE-GSZ | GE-MS |
|-----------------------|---|-------------------|------------------|-------------------|
| Suitable Bottle | Round, square, oval and other special-shaped bottle. Bottle Diameter: Φ20-100mm Bottle Height: 30-180mm | | | |
| Capacity | 10-70bottles/min | 60-100bottles/min | 30-80bottles/min | 10-40bottles/min |
| Desiccant/Cotton Type | Roll type | Roll type | Canister type | Strip type |
| Power Supply | 220V 50HZ 0.5KW | 220V 50HZ 0.65KW | 220V 50HZ 0.6KW | AC220V 50HZ 0.5KW |
| Air Consumption | 0.6Mpa 3L/min | 0.3Mpa | 0.6Mpa 3.5L/min | 0.6Mpa 3.8L |
| Dimension | 1360x750x1950mm | 1700x900x2100mm | 1360x750x1780mm | 1360x1080x1410mm |
| Weight | 310KG | 300KG | 180KG | 310KG |

GE-CG/YX Series Automatic Capping Machine

Innovative Technology

- The bottle caps are arranged by the capping mechanism.
- The bottle cap with the mouth facing up is continuously sent to the capping track, and the bottle delivered from other equipment of the assembly line to the bottle feeding track enters to the capping area.
- When the bottle is clamped and moved forward by the bottle clamping devices on both sides, the bottle cap is automatically covered.
- The capping device presses the bottle cap to the pre tightening state before the capping, under the action of three pairs of high-speed rotating wear-resistant rubber wheels, The cap is tightly screwed on the bottle.



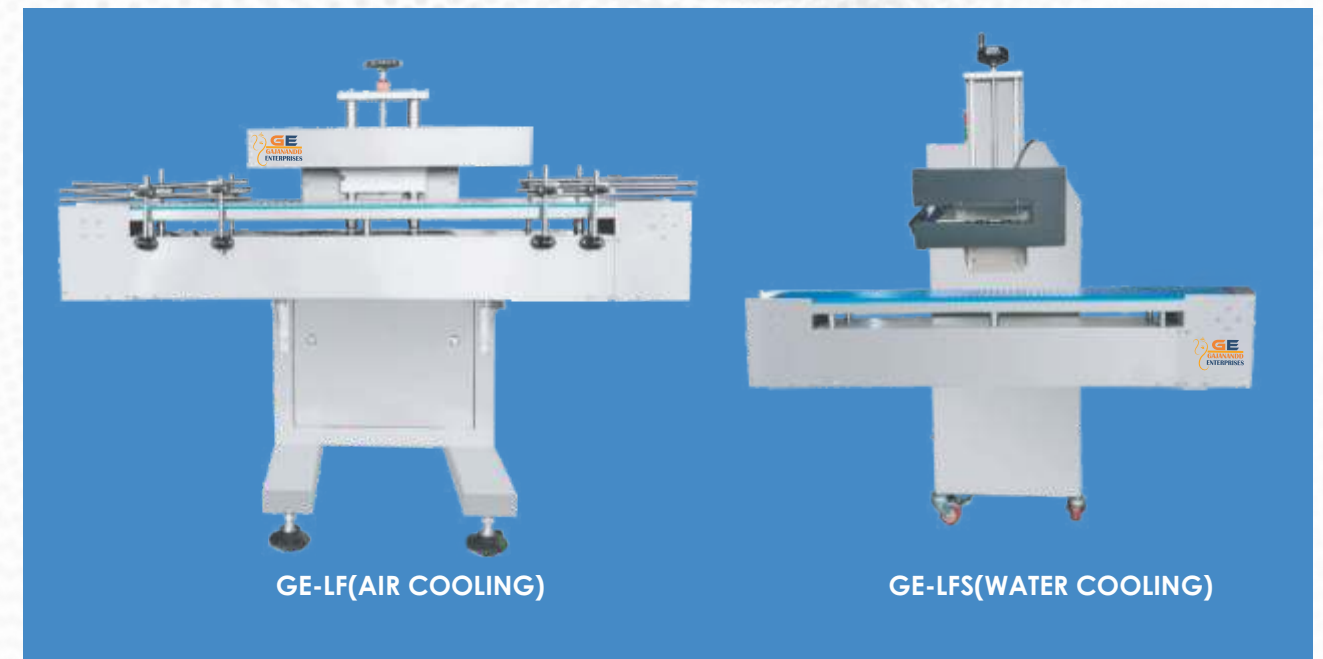
Technical Data:

| Model | GE-CG | GE-4CG | GE-YX |
|-----------------|--|-------------------|----------------------|
| Application | Plastic caps such as ordinary caps, children caps, double layer caps, and flip caps, etc | | Round plastic bottle |
| Capacity | 10-100bottles/min | 10-120bottles/min | 20-50bottles/min |
| Power Supply | 220V 50HZ 1.8KW | 220V 50HZ 1.8KW | AC220V 50HZ 0.3KW |
| Air Consumption | 0.6Mpa 3L/min | 0.6Mpa 3L/min | 0.6Mpa 3L/min |
| Dimension | 2280×1080×1940mm | 2160×1050×1900mm | 1850×1300×1400mm |
| Weight | 510KG | 650KG | 350KG |

GE-LF Induction Sealing Machine

Innovative Technology

- GE-LF Induction Sealer adopts air or water circulation technology to make sure fast cooling.
- Ensure the stability and reliability of the induction parts, suitable for all kinds of aluminum foil material, ensure the qualified rate of sealing.
- It is suitable for sealing plastic bottles and glass bottles of pesticide, medicine, food, cosmetics industry.



Technical Data:

| Model | GE-LF(AIR COOLING) | GE-LFS(WATER COOLING) |
|--------------|---|-----------------------|
| Application | Bottle Neck: 20-120mm Bottle Height: 10-180mm (Special requirements can be customized.) | |
| Capacity | 50-150bottles/min | 0-300bottles/min |
| Power Supply | 220V 50/60HZ 2KW | 220V 50/60HZ 4KW |
| Dimension | 1360 x700x1210mm | 1360x500x1090mm |
| Weight | 130KG | 75KG |

GE-YDT/PT/TB/WT Automatic Labeling Machine

Innovative Technology

- The bottles that need to be labeled are transmitted through the bottle feeding track.
- The bottles are equidistant from each other through the bottle distance adjusting mechanism.
- The photoelectric sensor senses the bottles passing by and sends a signal.
- The transmission system gets the signal, and starts to send the label.
- The tensioning system realizes the tension of the label paper tape.
- After the coding machine, the label paper positioning photoelectric sensor positions according to the length of the label paper and pulls the label paper out to a certain extent.
- The length of the label, under the action of the labeling part and the pressure labeling part, the label automatically peels off and pastes to the required position of the bottle smoothly to complete the whole labeling process.



GE-YDT



GE-TB



GE-PT



GE-WT

Technical Data:

| Model | GE-YDT | GE-PT | GE-WT | GE-TB |
|-----------------|-------------------|------------------|-------------------|-----------------------|
| Application | Round bottles | Flat products | Round bottles | Round, square bottles |
| Capacity | 50-100bottles/min | 40-80pcs/min | 20-130bottles/min | 40-60bottles/min |
| Power Supply | 220V 50HZ 0.15KW | 220V 50HZ 0.15KW | 220V 50HZ 0.25KW | 220V 50HZ 1.2KW |
| Air Consumption | 0.6Mpa 5L/min | 0.6Mpa 3L/min | 0.6Mpa 3L/min | 0.6Mpa 3.6L/min |
| Dimension | 1760x950x1400mm | 2200x780x1400mm | 1760x700x1550mm | 2600x1350x1400mm |
| Weight | 190KG | 250KG | 230KG | 350KG |

GE-PTG Effervescent Tablets Tube Packing Machine

Working Principle

GE-40PTG Effervescent Tablets Tube Packing Machine is applicable for packing of bigger and thinner tablets which are orderly fed into bobbin bottles/tube in a single row.

Innovative Technology

- Cap vibrating: It will automatically arrange the cap in the hopper move to the track by the vibrating system for capping.
- Tablet feeding: It will automatically send the tablets in the hopper to the channels for packing preparation.
- Tube feeding: The shaking system will automatically send tube to the rack.
- Cap pushing: Cap pushing system will push cap and close the tube automatically, no tablet no capping, no tube no capping.
- Electronic control section: This machine is controlled by PLC, cylinder and step motor, with automatic multi-function alarm system.



GE-40PTG



GE-80PTG

Technical Data:

| Model | GE-40PTG | GE-80PTG |
|----------------|----------------------|----------------------|
| Capacity | 20-40bottle/min | 60-80bottle/min |
| Power Supply | 220V/50HZ 1.5KW | 220V/50HZ 5KW |
| Compressed Air | 0.5~0.6MP 0.28m3/min | 0.5~0.6MP 0.28m3/min |
| Dimension | 2400x1600x1800mm | 5800x2260x2070mm |
| Weight | 480kg | 1500kg |

GE-RTB Sleeve Labeling Machine

Innovative Technology

- GE-RTB Series Shrinkable Label Sleeve Machine is in accordance with all the industry's packaging requirements.
- We improve the machine on mechanical structure, circuit design, intelligent control and the promotion of productivity.
- The design department constantly research and develop, use advanced AC servo motor: speedy, label position high stable.
- Let the servo motor perfect play to ensure high-quality, high-yield output, high-precision and also keep stable operation on all these demands.



Technical Data:

| Model No | GE-RTB | Label Material | PVC PET OPP OPS |
|----------------------------------|--------------|-------------------------|--|
| Capacity | 50-150BPM | Heat Tunnel | Steam type (electrical shrinking tunnel is optional) |
| Suitable Bottle (mouth) Diameter | Φ50~Φ190mm | Operation Mode | Automatic control. |
| Wrap Label Length | 40~200mm | Main Machine Outer Size | 2100L×850W×2000H (mm) |
| Label Thickness | 0.035~0.10mm | Equipment Weight | 450kg |

GE-RP Automatic Strip Packing Machine

Working Principle

GE-RP series aluminum strip packaging machine adopts touch screen and PLC control system. The feeding mode equipped with photoelectric monitoring device, which can automatically control the feeding. It is widely used in strip packaging of various tablets, capsules and electronic products in the pharmaceutical and health products industry.



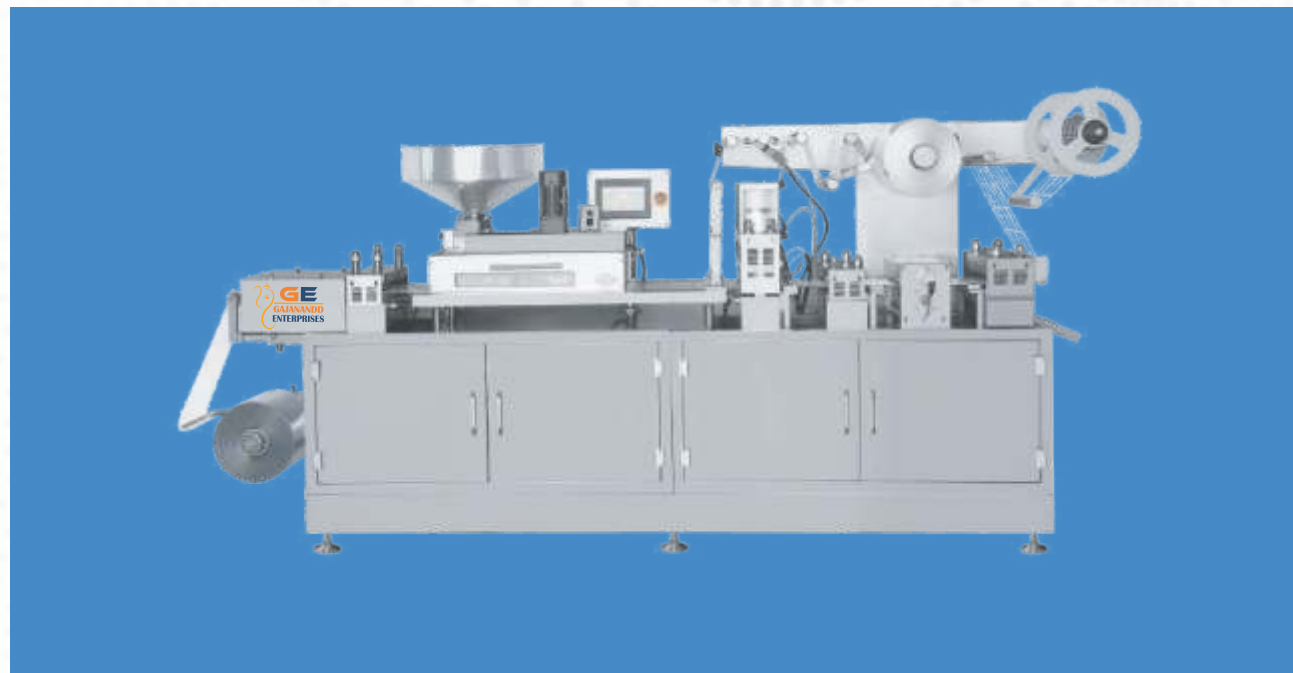
Technical Data:

| Model | GE-160RP | GE-260RP |
|------------------|------------------|------------------|
| Capacity | 500-800pcs/min | 660-1300pcs/min |
| Packaging Area | 160mm×any length | 350mm×any length |
| Punch Frequency | 10~30times/min | 10~30times/min |
| Dia Of Film Roll | 300mm | 300mm |
| Motor power | 0.75KW | 0.75KW |
| Total motor | 2.75KW | 3.75KW |
| Air Compressor | 0.5Mpa | 0.5Mpa |
| Dimension | 1300×750×1700mm | 1600×850×1900mm |
| Weight | 900KG | 1100KG |

GE-P Blister Packing Machine

Introduction

The advanced function, simple operation, high capacity of the machine makes it to be the most ideal packaging equipment of large and medium-sized pharmaceutical companies, health care products and food industry. The working process includes PVC blister forming, automatic feeding, PTP aluminum foil flat press heat-sealing, printing register control, batch number embossing, easy cutting line, embossing, blister cutting, waste recycling. The machine is suitable for package of aluminum-PVC (aluminum aluminum) blister package for pharmaceutical, chemical, light industry and food industry.



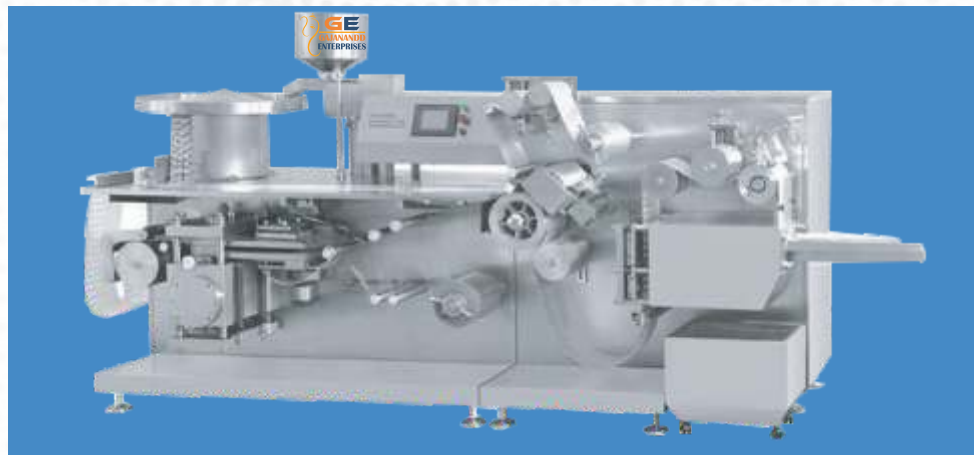
Technical Data:

| Model | | GE-140P | GE-250P | GE-260P | GE-350P |
|------------------------------|-------|--|--|---|--|
| Cutting frequency (standard) | | 15-45cutting/min (Standard Size 57×80) | | | |
| Max. forming area and depth | | 140*110*15mm | 250*120*15mm | 250X110X15mm | 350*130*15mm |
| Range of travel | | 30-120mm | 30-130mm | 30-120mm | 30-140mm |
| Packaging material Φ75 | PVC | (0.15-0.6) X 160 X (Φ350)mm | (0.15-0.4) X 260 X (Φ400)mm | (0.15~0.4) X 270X(Φ400) mm | (0.15-0.6) X 350 X(Φ400)mm |
| | PTP | (0.15-0.6) X 160 X (Φ350)mm | (0.02-0.15) X 260 X(Φ400)mm | (0.02~0.15) X 270 X(Φ300)mm | (0.02-0.15) X 350 X(Φ400)mm |
| | Paper | (50-100)g/m ² X 160 X(Φ350)mm | (50-100)g/m ² X 260 X(Φ400)mm | (50-100)g/m ² X 270X(Φ300)mm | (50-100)g/m ² X 350 X(Φ400)mm |
| Power | | 380V 50Hz 5.5Kw | 380V 50Hz 8Kw | 380V 50Hz 8Kw | 380V 50Hz 9.5Kw |
| Air compressor | | 0.6-0.8Mpa ≥0.4m ³ /min | 0.6-0.8Mpa ≥0.45m ³ /min | 0.6~0.8Mpa ≥0.25m ³ /min | 0.6-0.8Mpa ≥0.6m ³ /min |
| Mould cooling | | 40-80L/h | 40-80L/h | 60-100L/h | 60-100L/h |
| Dimension (L X W X H) | | 2400 X 650 X 1460mm | 2900 X 750 X 1600mm | 3550 X 900 X 1900 mm | 3650 X 850 X 1700mm |
| Weight | | 800KG | 1200KG | 2000KG | 2000KG |

GE-GP High Speed Blister Packing Machine

Innovative Technology

- The machine is improved with higher intelligent and stable working. The machine can make 180cuttings/min by dislocation cutting style which makes the client can save packaging materials.
- The 10.4 inches HMI is equipped on a moveable hanging arm which allows the operator can do easier and simpler operating. HMI also allows the operator connects with USB, Printer, data reader, etc.
- The machine comes with auto lubrication system on forming station and cutting station which avoiding operators do manual lubrication before every batch of production.
- The mechanical transmission parts are installed inside the machine which makes the machine more clean and better looking.



Technical Data:

| Model | Unit | GE-260GP | GE-220GP |
|---------------------------------------|-----------|-------------------------------------|-------------------------------------|
| Max Cuting Speed | times/min | 150 | 150 |
| Max Formming Depth | mm | 12 | 12 |
| Max Forming Area | mm | 180x 260(LxW) | 180x 220(LxW) |
| Packing Material (Thickness x width) | mm | PVC(025-0.35)x 260 PTP 0.02x 260 | PVC(025-0.35)x 220 PTP 0.02x 220 |
| Material Roll Quter Diameter | mm | PVC<φ400 PTP<φ250 | PVC<φ400 PTP<φ250 |
| Inner Core Diameter | mm | PVC& PTPφ70-76 | PVC& PTPφ70-76 |
| Overall Dimensions | mm | 3130x1150x1900(LxWxH) | 3130x1150x1900(LxWxH) |
| Weight | Kg | 2600 | 2400 |
| Rated Power | Kw | 16.5KW 380V/50Hz | 16KW 380V/50Hz |

GE-TP Series De-Blistering Machine

Working Principle

The aluminum-plastic medicine remover is an automatic tablet picking (peeling) machine for recovering medicines in defective aluminum-plastic blister packs.

Innovative Technology

- The machine with good appearance, simple operation, and easy for cleaning.
- The machine with stainless steel 304, pure PU material roller, will protect the drugs from secondary pollution.
- Equipment with high precision, the capsules, tablets will not be squeezed when peel out from the aluminum-plastic blisters.
- The machine with safe operation, easy to adjust the arrangement of the medicine blisters, no need to replace the mould.



Technical Data:

| Model | GE-35TP | GE-65TP | GE-120TP | GE-280TP |
|--------------------------|---|---|------------------|------------------|
| Operating Mode | Manual | Manual | Automatic | Automatic |
| Work Efficiency | 35 blisters/min | 65 blisters/min | 120 blisters/min | 280 blisters/min |
| The Scope Of Application | Capsules, tablets, soft capsules, candy, etc. All aluminum plastic blisters | | | |
| Application To The Plate | The granules Can be arranged in any form | The granules should be arranged horizontally and vertically | | |
| Change The Mold | No need of changing mold | | | |
| Power Requirements | 220V AC:50-60HZ | | | |
| Rated Power | 60W | 180W | 180W | 360W |
| Equipment Weight | 18kg | 25kg | 38kg | 65kg |
| Dimensions | 285×290×285mm | 350×380×510mm | 400×400×1100mm | 900×500×1200mm |

GE-LB Automatic Sachet Packing Machine

Machine features

- This machine can finish : forming bag--measuring--material filling--sealing--counting--date code printing, all the work automatically;
- Photoelectric and tracing system or computer system can be provided without your specific requirements.
- The PLC controller has the advantages such as setting the length of the bag; the out put alarm and the speed and quantity with buttons;
- This machine can be installed to code printer for 1-3 lines characters such as production and expiry date according to your special request.
- Eye Mark System ,machine can cut complete logo
- Machine Stop Automaticlly if it is out of film
- Fine Packaging performance.low noises .clear sealing texture and strong sealing performacnce



Technical Data:

| Model | GE-100YLB | GE-100FLB | GE-100KLB | GE-100GLB |
|----------------------|--|--------------------------|--------------------------|--------------------------|
| Application | Liquid | Powder | Particle | Paste |
| Capacity | 20-60bags/min | 20-60bags/min | 20-40bags/min | 20-60bags/min |
| Range of Measurement | 0-100ml | 0.5-50g | 0-100ml | 10-40ml |
| Bag size | W:30-100mm L:30-170mm | W:30-100mm L:30-140mm | W:30-100mm L:30-170mm | W:40-110mm L:40-160mm |
| Sealing Type | Back sealing, 3 or 4 side sealing | | | |
| Packing Material | Paper/the polyethylene,nylon/polyethylene,tea filter paper,etc | | | |
| Power Supply | 220V/50HZ/1P | | | |
| Power | 1.5KW | 1.18KW | 1.5KW | 2KW |
| Dimension | 1100×850×1800mm | 1100×850×1800mm | 1100×850×1800mm | 1100×900×1900mm |
| Weight | 220KG | 220KG | 220KG | 240KG |

GE-GD Automatic Premade Bag Packing Machine

Introduction

This machine is specially designed for small bag and middle bag packaging. Mainly used in food, daily chemical, agrochemical and other industries, the packaging materials include powder, granule, liquid and other materials, suitable for standing bags, zipper bags, flat bags, hanging hole bags, special-shaped bags and other prefabricated bags. Different blanking devices can be used to pack different products.



Technical Data:

| Model | GE-240YGD | GE-200FGD | GE-200KGD |
|------------------|---|----------------------------|----------------------------|
| Product | Liquid | Powder | Granule |
| Bag size | W:80-240MM L:150-350mm | W:100-300mm, L:80-200mm | W:100-200mm L:150-320mm |
| Bag type | Zipper bags, flat bags, hanging hole bags, special-shaped bags and other prefabricated bags | | |
| Packing speed | 35~45bags/min | 20-40bags/min | 20-50bags/min |
| Power supply | 380V 50HZ 3P | | |
| Power | 6kw | 2.5KW | 7.5KW |
| Packing material | PA/PE, PET/PE, aluminum film and other heat-sealable films | | |

GE-FGJ Powder Bottle Filling Machine

Introduction

This Machine is a complete, economical solution to your filling production line requirements. Can measuring and filling powder and granular. It fits to the fluidic or low-fluidity materials, like milk powder, albumen powder, pharmaceuticals, condiment, solid drink, white sugar, dextrose, coffee, agriculture pesticide, granular additive, and so on.



Technical Data:

| Model | GE-1FGJ | GE-2FGJ | GE-4FGJ |
|---------------|------------------|-------------------|-------------------|
| Filling head | 1 | 2 | 4 |
| Filling range | 10-1000g | 100-500g | 100-700g |
| Filling speed | 10~20bottles/min | 20-30 bottles/min | 50-60 bottles/min |
| Power supply | 380/220V 50-60HZ | | |
| Power | 1.8KW | 4KW | 4.2KW |
| Weight | 150KG | 500KG | 700KG |
| Dimension | 2000×2500×2100mm | 4000×3000×2400mm | 1900×1000×1550mm |

GE-RZ Series Vacuum Emulsifying Machine

Working Principle

The main systems are homogenizer & Middle(Fixed) Stirrer & Scrapers residues stirrer, adopt the vacuum pump to draw out air form material, ensure the finished product is rich gloss, fine, smooth and prolongs quality product with good malleability.



PRODUCT PARAMETERS

■ Vacuum Emulsifying Machine

| Model | | GE-5RZ | GE-10RZ | GE-30RZ | GE-50RZ | GE-100RZ | GE-150RZ | GE-200RZ |
|-----------------|-------------------------------|----------------|---------|-------------------------------------|-------------------------------------|--------------------------------------|--------------------------------------|--------------------------------------|
| Emulsifying Pot | Design Volume (L) | 6 | 10 | 30 | 50 | 100 | 150 | 200 |
| | Working Capacity(L) | 5 | 8 | 25 | 40 | 80 | 120 | 160 |
| | Scraper Stirring Power (KW) | 0.55 | | 0.75 | | 1.5 | | 2.2 |
| | Speed(rmp) | 0-86 | | | | | | |
| | Homogenizer Power(KW) | 1.1 | | 1.5 | | 3 | 4 | |
| | Electrical Heating Power (kw) | 2 | | 2 | 4 | 6 | | 8 |
| | Homogenizer Speed(rmp) | 3500 | | 2800 | | 2800 | | |
| Water Pot | Design Volume(L) | 3.35 | 7.8 | 25 | 38 | 60 | 100 | 120 |
| | Working Capacity(L) | 2.7 | 6 | 20 | 30 | 45 | 80 | 95 |
| | Power(kw) | 0.025 | | 0.55 | | | | 0.75 |
| | Speed(rmp) | 1200 | | | 1400 | | | |
| | Electrical Heating Power(kw) | 1 | | 2 | | 4 | 6 | 8 |
| Oil Pot | Design Volume(L) | 3.35 | 7.8 | 17.5 | 25 | 45 | 75 | 100 |
| | Working Capacity(L) | 2.7 | 6 | 14 | 20 | 35 | 60 | 80 |
| | Power(kw) | 0.025 | | 0.55 | | | | 0.75 |
| | Speed(rmp) | 1200 | | | 1400 | | | |
| | Electrical Heating Power(kw) | 1 | | 2 | | 4 | 6 | 8 |
| Demension | LxWxH | 800X550X1430mm | | Emulsifying: 1400x600x (1900-2400) | Emulsifying: 1400x600x (1950-2500) | Emulsifying: 1750x650x (2150-2850) | Emulsifying: 1900x780x (2380-3000) | Emulsifying: 1450x600x (2650-3500) |
| | | | | Water pot and Oil pot: 880x510x1050 | Water pot and Oil pot: 950x550x1100 | Water pot and Oil pot: 1220x610x1300 | Water pot and Oil pot: 1170x710x1500 | Water pot and Oil pot: 1550x820x1520 |

| Model | | GE-250RZ | GE-350RZ | GE-650RZ | GE-850RZ | GE-1000RZ | GE-1300RZ | GE-2000RZ | |
|-----------------|------------------------------|----------------|----------|-------------------------------------|-------------------------------------|--------------------------------------|--------------------------------------|--------------------------------------|--|
| Emulsifying Pot | Design Volume(L) | 250 | 350 | 650 | 850 | 1000 | 1300 | 2000 | |
| | Working Capacity(L) | 200 | 280 | 520 | 680 | 800 | 1000 | 1600 | |
| | Scraper Stirring Power (KW) | 2.2 | | 4 | | | | 7.5 | |
| | Speed(rmp) | 0-65 | | | | 0-45 | | | |
| | Homogenizer Power(KW) | 4 | | 11 | 15 | 15 | 18.5 | 30 | |
| | Electrical Heating Power(kw) | 12 | | 18 | | 24 | | 30 | |
| | Homogenizer Speed(rmp) | 2800 | | | | | | | |
| Water Pot | Design Volume(L) | 160 | 250 | 400 | 500 | 650 | 800 | 1200 | |
| | Working Capacity(L) | 128 | 200 | 320 | 400 | 500 | 650 | 630 | |
| | Power(kw) | 0.75 | | 1.1 | | 1.5 | | 2.2 | |
| | Speed(rmp) | 1400 | | | 960 | | | | |
| | Electrical Heating Power(kw) | 8 | 12 | 18 | | | 24 | | |
| Oil Pot | Design Volume(L) | 130 | 250 | 320 | 400 | 500 | 650 | 950 | |
| | Working Capacity(L) | 105 | 150 | 250 | 300 | 400 | 500 | 760 | |
| | Power(kw) | 0.75 | | 1.1 | | 1.5 | | 2.2 | |
| | Speed(rmp) | 1400 | | | 960 | | | | |
| | Electrical Heating Power(kw) | 8 | 12 | 12 | | 18 | | 24 | |
| Demension | LxWxH | 800X550X1430mm | | Emulsifying: 1400x600x (1900-2400) | Emulsifying: 1400x600x (1950-2500) | Emulsifying: 1750x650x (2150-2850) | Emulsifying: 1900x780x (2380-3000) | Emulsifying: 1450x600x (2650-3500) | |
| | | | | Water pot and Oil pot: 880x510x1050 | Water pot and Oil pot: 950x550x1100 | Water pot and Oil pot: 1220x610x1300 | Water pot and Oil pot: 1170x710x1500 | Water pot and Oil pot: 1550x820x1520 | |

GE-30RG Semi Automatic Tube Filling And Sealing Machine

Innovative Technology

- Inside heating heater (Switzerland and LEISTER).
- Externally allocated Water Chiller.
- Jacket barrel heat preservation device, blending device inside the barrel.
- Automatically controlled material feeding device (pump) .
- Finished tube conveyor.
- Organic Glass Safety Door.



Technical Data:

| Model | GE-30RG | Dimensions | 1100x800x1600mm |
|-------------------|--|------------------|---------------------------------|
| Power Supply | 220V±10% | Weight | 280kg |
| Power | 0-250ml (customized according to need) | Working Pressure | >0.4Mpa |
| Capacity | 10-30tubes/min | Tube Material | Aluminum/Plastic-Composite tube |
| Filling Precision | ±1% | | |

GE-RG Automatic Tube Filling And Sealing Machine

Working Principle

The automatic tube filling machine is mainly used to filling ointment materials into cylindrical, capped tubes of Aluminum or Composite and seal the tubes ends. In compliance with the standard of GMP, the dosing pump is a new type stainless steel butterfly valve for ointment filling with highly accuracy filling weight.

Innovative Technology

- Standard configuration: Obliquely hanging type tube hopper for tube feeding.
- Optional: Hopper with Jacket and heating device.
- Optional: Hopper with stir .
- Optional: Pump for automatically material feeding controlling.
- Optional: Finished tube conveyor.



Technical Data:

| Model | GE-60RG | GE-80RG | GE-100RG | GE-160RG1 | GE-160RG2 |
|------------------------|----------------------------------|----------------|----------------|----------------|-----------|
| Tube Material | Aluminum/Plastic- Composite tube | | | | |
| Tube Diameter (mm) | 13-50 | | | 12-50 | |
| Tube Length(mm) | 50-210 | | 50-200 | 230(The Max.) | |
| Capacity(pcs/min) | 30-50 | 50-75 | 80-120 | 120-160 | 110-160 |
| Filling Volume(ml) | 5- 250 | 3-250 | 3-250 | 2-200 | |
| Motor Power(kw) | 1.1 | 1.5 | 2.2 | 1.7 | 6.5 |
| Filling Accuracy | ±1% | | | | |
| Power Supply | AC380V/220V, 50Hz/60Hz | | | | |
| Dimensions (LxWxH)(mm) | 1950×1000×1800 | 2200×1200×1900 | 2350×1300×2200 | 3147×1555×2267 | |
| Weight(kg) | 850 | 1200 | 1500 | 3000 | |

GE-WZH Series Automatic Cartoning Machine

Innovative Technology

- Its working process is the delivery of products; the delivery of instructions (automatic make 1-4 folds),the paper box is automatically opened and delivered, and the folded instructions and products are put into the paper box at the same time, and complex packaging processes such as automatic batch number printing, paper tongue sealing at both ends are completed.
- It is suitable for automatic packaging of ointment (aluminum bottles and plastic bottles), soft packaging and pallets.



Technical Data:

| Model | GE-120WZH |
|--------------------------|---|
| Applicable objects | 7-180mm 35-80mm 14-50mm |
| production | 50-100 boxes/minute |
| power supply | 1.5 kw |
| Paper box size (minimum) | 45*20*14mm |
| Paper box size (maximum) | 250*150*120mm |
| Paper box material | White card 250-350g/m2; Grey card 300-400g/m2 |
| compressed air | ≥0.6Mpa |
| Dimensions | 3300*1550*1560mm |
| weight | 1000KG |

GE-RJ Soft Gelatin Encapsulation Machine

Innovative Technology

- Adopts big size touch screen, with fault diagnostic function, can store various kinds of operating parameters.
- The mould adopts the aviation aluminum alloy, with long service life.
- Discharge soft capsules by net-hopper, and form in advance by cold air, make soft capsule molding more beautiful and the conveying more reasonable.
- Material hopper is not only temperature adjusting, also the mixing with speed adjusting.



Technical Data:

| Model | GE-200RJ | GE-250RJ | GE-300RJ | GE-0.8-110RJ |
|------------------------------|------------------|------------------|------------|-----------------|
| Roller Die Rated Speed | 0-7r/min | 0-5r/min | | 0-7r/min |
| Roller Die Size | Φ103X200mm | Φ150X250mm | Φ150X300mm | Φ72X110mm |
| Single Piston Feeding Volume | 0-2ml | | | 0-0.8ml |
| Power Supply | 380V 50Hz | | | 380V 50Hz |
| Noise | <75dBA | | | <75dBA |
| Dimensions | 1990X1040X2100mm | 2420X1180X2210mm | | 1500X550X1700mm |
| Net Weight | 1000kg | 1800kg | 1900kg | 700kg |
| Total Power | 11kw | 17kw | 17.6kw | 6.6kw |

ACCESSORY EQUIPMENT

■ For Soft Gelatin Encapsulation Machine



Tumble Dryer

Softgel drying tunnel machine is used for secondary drying of soft gelatin capsules to reduce water content in the capsule to levels appropriate for product stability.



Jacketed Gelatin Storage Tank

Designed with three stainless steel interlayers, gelatin service tank helps for accurate control of the temperature of medicine liquid. Typically designed paddle ensures quick agitating and mixing uniformly. Convenience in installation and cleaning. Ease and quickness in production.



Material Tank

This is a stainless steel container that holds material you would wish to encapsulate in the soft gelatin. There must be no leakages at the point it joints other section of the machine



Gelatin Melting Tank

Gelatin preparation tanks are used to melt gelatin for the softgel capsule process. The tanks are fitted with a water filled jacket that is heated to pre-set temperatures by electric heaters mounted in the base of the tank. During the melting process paddle impellers stir the solution while vacuum is applied for deaeration.



Material Preparation Tank

Material preparation tank (also known as materials blending tank, materials mixing tank or dispensing tank) is a type of material preparation equipment for encapsulation production, an important necessity in a material preparation system



Colloid Mill

The machine applies for most material attrition for pharmacy, foodstuff, chemical engineering and other industries, which serve for crushing, emulsifying, homogeneity and mixing of various kinds of semi fluid and emulsion substance. This is essential to material grinding equipment in the soft gelatin capsule production process



Drying Tray

Drying trays are used for soft gelatin capsules drying and setting. The trays are manufactured of polypropylene resin (PP) which is in line with GMP requirements. The moving brackets are manufactured of SUS304 stainless steel, with four casters in the bottom



Gelatin Pulverizer

It can recycle misshaped or unqualified capsules separately by capsule shell and inside medicine solution which saves a lot of cost during encapsulation process. Grinded capsule shell is discharged from the upper port while the medicine solution comes out from the lower port to avoid cross contamination. Automatic separation and discharge save labor.

GE-GX Automatic Liquid Filling And Capping Machine

Innovative Technology

GE-GX series automatic liquid filling machine is designed for filling and capping of various liquids. It is the main filling machine in the filling production line. This equipment is suitable for the filling and capping of various bottles. It adopts plunger filling method and capping station with auto cap loader, has the function of no bottle no filling. The machine combines filling and capping station, not only has a reasonable design in accordance with GMP design standards, but also has a compact structure and is easy to operate and maintain.



Technical Data:

| Model | GE-4GX | GE-6GX | GE-8GX | GE-12GX | GE-16GX |
|-----------------------------|--|----------------|----------------|----------------|----------------|
| Filling Head | 4 | 6 | 8 | 12 | 16 |
| Filling Volume | 5-20ml/20-60ml/60-150ml/150-250ml/250-500ml/500-1000ml/1L-2L/2L-5L | | | | |
| Filling speed (bottles/min) | 30-50 | 40-60 | 60-80 | 80-100 | 100-120 |
| Filling accuracy | 99.5% | | | | |
| Compressor Air | 0.4-0.6MPa | | | | |
| Power supply | 220V/380V 50HZ/60HZ | | | | |
| Power (KW) | 0.75 | 0.75 | 0.75 | 1.2 | 2.2 |
| Weight(Kg) | 500 | 500 | 800 | 1000 | 1300 |
| Dimensions (mm) | 1300X1000X1800 | 1300X1000X1800 | 1600X1000X1800 | 2300X1000X1800 | 2300X1000X1800 |

GE-SP Automatic Plastic Ampoule Liquid Filling And Sealing Machine

Main Feature

- It adopts PLC control and stepless frequency conversion speed regulation.
- The working processes such as unwinding, forming, filling, batch number printing, indentation, punching and cutting are completed automatically by the program.
- It adopts human-machine interface device, which has simple operation.
- The filling has no dripping, bubbling, and overflowing.
- The parts contacting with medicine all adopt high quality stainless steel material, which meets with GMP standard.
- The main pneumatic and electrical components adopt imported brand.
- It adopts electronic peristaltic pump or mechanical filling system, which have accurate metering with small error.



Technical Data:

| Model | GE-118-2SP | GE-118-5SP | GE-240-5SP | GE-360-10SP | GE-360-15SP |
|---------------------|---------------------------------|---------------------------|--------------------------------|---|---|
| Max Depth Forming | 12mm | 12 mm | 12mm | 12mm | 12mm |
| Punch Frequency | 0-25 times / min | 0-30 times/min | 100 times/min | 220-300 times/min | 220-300 times/min |
| Filling Head | 2 | 5 | 5 | 10 | 15 |
| Packaging Materials | PVC/PE, PET/PE (0.2-0.4) ×140mm | PVC/PE (0.2-0.4) x 140 mm | PET/PE PVC/PE (0.2-0.4) ×240mm | PET/PE PVC/PE PVC/ EVOH (0.2-0.4) x 360mm | PET/PE PVC/PE PVC/ EVOH (0.2-0.4) x 360mm |
| Filling Volume | 1-50 ml | 1-50 ml/branch | 1-50ml/piece | 1-100ml | 1-100ml |
| Power | 4.3 kw | 7kw | 8.5 kw | 30kw | 30kw |
| Voltage | 220/380V 50HZ/60HZ 3P | | | | |
| Weight (Kg) | 700 | 850 | 1200 | 3000 | 3000 |
| Dimensions(mm) | 1750X750X1400 | 2300X850X1450 | 3200X850X1900 | 7300X1050X1800 | 7300X1050X1800 |

GE-YGF Prefilled Plastic Syringe Filling And Plugging Machine

Introduction

This product is specially designed by our company for the filling of plastic syringes. It is an automatic packaging equipment for aseptic and efficient filling of syringes. The equipment runs smoothly, is simple to operate, and is equipped with intelligent detection devices, with high automation, high work efficiency, convenient maintenance, and the technology can reach the current domestic industry advanced level.



GE-BYGF



GE-YGF

| Model | GE-1BYGF | GE-2BYGF | GE-1YGF | GE-2YGF |
|--------------------------|--|------------------|---------------|---------------|
| Applicable materials | Liquid and ointment | | | |
| Applicable syringe spec. | 0.5、 1、 2.25、 3、 5、 10、 20ml (can be customized) | | | |
| Filling accuracy | ≤±2% | ≤±2% | ≤±1-2% | ≤±1% |
| Injection needles No. | 1 | 2 | 1 | 2 |
| Capacity | 600-1800P/h | 1200-1800times/h | 2200-2600 p/h | 1200-1800 p/h |
| Supply power | 380V/220V 50-60Hz | | | |
| Air Pressure | 0.4-0.8Mpa | 0.5-0.8Mpa | 0.55-0.75Mpa | 0.55-0.75Mpa |
| Dimensions(mm) | 400×400×1450 | 750×500×1500 | 1230×850×1800 | 1088×858×1800 |
| Weight (KG) | 50 | 65 | 500 | 500 |



- 1 Syringe tubes loading and lifting
- 2 Assembly machine(Assembly the syringe body with rubber plug)
- 3 Syringe tubes loading and lifting
- 4 Syringe filling and caps closing
- 5 Syringe traying
- 6 Syringe out of nest and loading
- 7 Syringe visual inspection
- 8 Plunger rod screwing and labeling batch number

Clean zone (Local hundred grade) machine functions and features

- This machine is suitable for all kinds of plastic syringes.
- Syringe tubes lifting
- Assemble the syringe body with rubber plug
- Assemble and lift syringes with rubber plug.
- Liquid filling, caps closing, caps screwing, sealing
- After finished syringe code into the tray.
- Local laminar flow protection for the above equipment

General area functions and features

- The syringe out of box, lifting
- Artificial 3 times put big visual inspection check, kick disable.
- Put the syringe plunger in syringe, screwing plunger, labeling, put batch number

GE-AGLX Ampoule Washing, Drying Filling And Sealing Linkage Line

Introduction

The linkage line consists of vertical ultrasonic washing machine, hot air circulation sterilization tunnel, GE-AGLX filling and sealing machine. The model can be used in combination or in a single machine. The linkage line can complete water spray filling, ultrasonic cleaning and flushing (internal and external), CA flushing (internal and external), preheating, drying and sterilizing to remove heat source, cooling, before and after nitrogen, sealing after preheating, sealing and other processes. This line can meet the size range from 1-20ml ampoule of washing, drying and sterilizing to remove heat source, filling and sealing requirements of the production process.



| Model | GE-6AGLX | GE-8AGLX | GE-10AGLX | GE-12AGLX | GE-16AGLX |
|--------------------|-----------------|----------------|----------------|----------------|-----------------|
| Suitable sizes(ml) | 1-20ml(ampoule) | | | | |
| Capacity(pcs/h) | 6000-16000 | 8000-21000 | 10000-24000 | 12000-30000 | 16000-36000 |
| Filling heads | 6 | 8 | 10 | 12 | 16 |
| Power supply | 380V 50hz | | | | |
| Power (KW) | 78 | 78 | 80 | 90 | 90 |
| Weight(Kg) | 8900 | 8900 | 9400 | 9700 | 10100 |
| Dimensions (mm) | 9100×2200×2450 | 9100×2200×2450 | 9260×2200×2450 | 9910×2200×2450 | 10042×2200×2450 |

GE-XGS Vial Washing, Drying Filling And Sealing Linkage Line

Introduction

The linkage line consists of vertical ultrasonic washing machine, hot air circulation sterilization tunnel, GE-XGS series filling and stoppering machine. The model can be used in combination or in a single machine. The linkage line can complete water spray filling, ultrasonic cleaning and flushing (internal and external), CA flushing (internal and external), preheating, drying and sterilizing to remove heat source, cooling, filling, sealing, capping and other processes etc. This line can meet the size ranging from 2-30ml vials of washing, drying and sterilizing to remove heat source, filling and sealing requirements of the production process.



| Model | GE-2XGS | GE-4XGS | GE-6XGS | GE-8XGS | GE-10XGS | GE-12XGS | GE-16XGS | GE-20XGS |
|------------------------------|----------------|----------------|----------------|----------------|----------------|----------------|----------------|----------------|
| Suitable sizes(ml) | 2-30ml(vial) | | | | | | | |
| Output (pcs/min) | 30-60 | 60-120 | 90-180 | 150-240 | 180-300 | 220-400 | 300-500 | 420-600 |
| Filling heads | 2 | 4 | 6 | 8 | 10 | 12 | 16 | 20 |
| Filling accuracy | ±1% | | | | | | | |
| Qualified rate of stoppering | >99.99% | | | | | | | |
| Breakage rate | <0.1% | | | | | | | |
| Power supply | 380V50Hz | | | | | | | |
| Power (KW) | 6 | 6 | 8 | 8 | 9 | 9 | 11 | 11 |
| Weight(kg) | 1800 | 1800 | 2100 | 2100 | 2300 | 2300 | 2500 | 2800 |
| Dimensions (mm) | 3250X1700X2450 | 3250X1700X2450 | 3250X1700X2450 | 3650X1700X2450 | 3650X1700X2450 | 3650X1700X2450 | 4570X1850X2450 | 4953X1850X2450 |